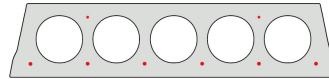


# FR13-60

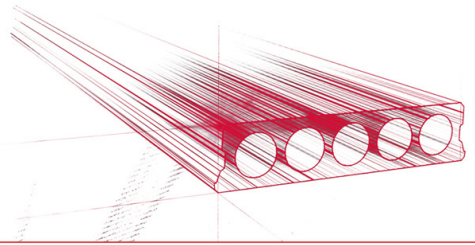


## Technische Infos

Höhe (Dicke)	130mm
Breite	596mm
Länge	Wap. S350: 0,60m => 5,20m uit voorraad (per 10cm olopend) Wap. S700: 5,30m uit voorraad
Feuerwiderstand	1 uur
Expositionsklasse	XC1; XC2; XC3 (andere op bestelling)
Transportgewicht	1,95 kN/m <sup>2</sup>
Gewicht /m	1,17 kN/m
Bemessungsgewicht	2,12 kN/m <sup>2</sup> (incl. voegvulling)
Hohlraumfüllung	5,54 l/m
Füllbeton	7 l/m <sup>2</sup>
Betongüte	C 40/50
Stahlqualität	f(pk)500; f(p0.1k) 550

## Keurmerken





## Spannweiten

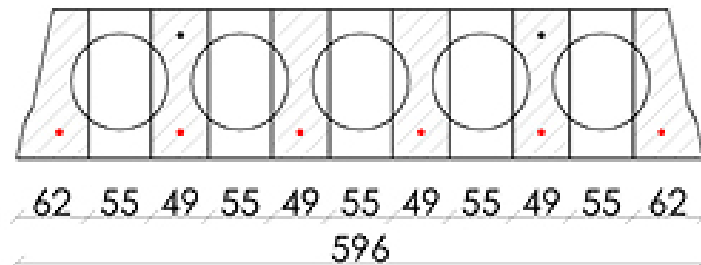
---

Zie hiervoor onze online rekenmodule



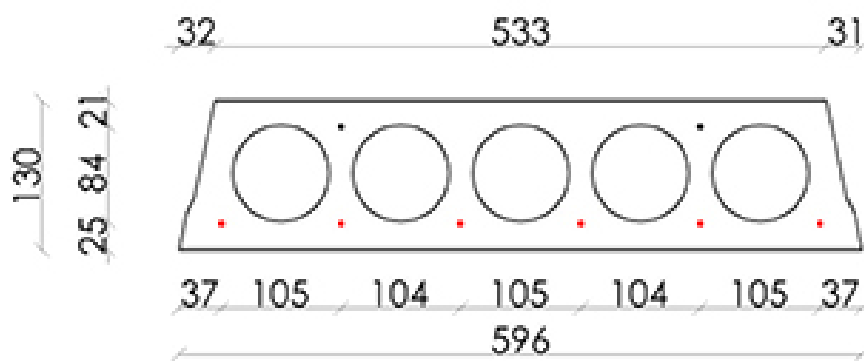
## Bohrvorschriften

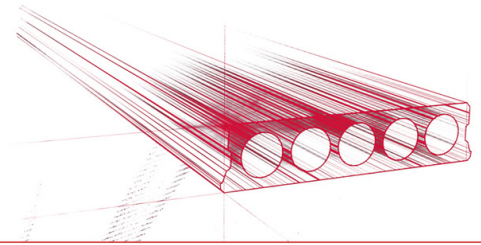
---



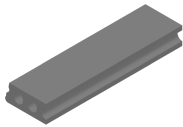


## Bewehrungspositionen

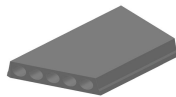




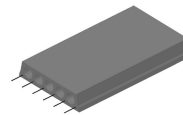
## Zubehör



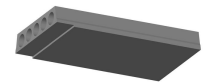
Passplatten - Stahlbeton-Hohlplatte



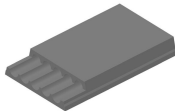
Schrägschnitte



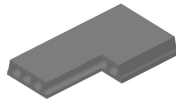
Ausstehende Bewehrung



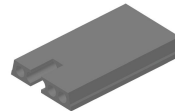
Verjüngte Unterseite



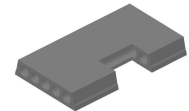
Verjüngte Oberseite



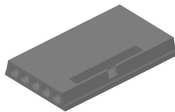
Eckaussparungen



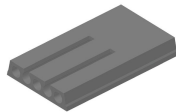
Kopfaussparung



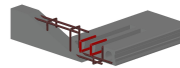
Randaussparung



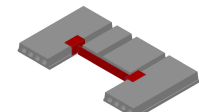
Ausnehmungen zur Plattenkopplung



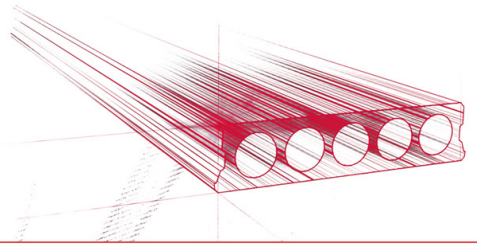
Geöffnete Hohlkammern



Open kanalen met inhangwapening



Wechseleisen Stahlbeton-Hohlplatten



## Vorrat

	Produktion	Abnehmbar	Vorrätig
Malle 1			
Malle 2			
Frederickx	X	X	X
Tessengerlo			

