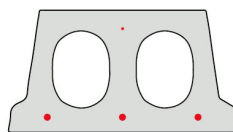


F170-330

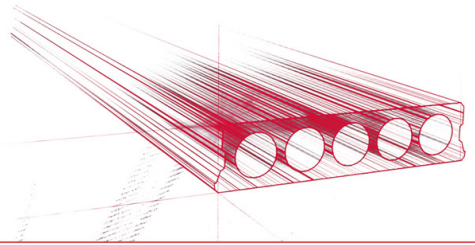


Technische Infos

Höhe (Dicke)	173mm
Breite	330mm
Länge	Wap. S700: 2,00m => 6,20m uit voorraad (per 10cm olopend)
Feuerwiderstand	1 uur (2u op bestelling)
Expositionsklasse	XC1; XC2, XC3 (andere op bestelling)
Transportgewicht	2,25 kN/m ²
Gewicht /m	0,74 kN/m
Bemessungsgewicht	3,00 kN/m ² (incl. voegvulling)

Keurmerken



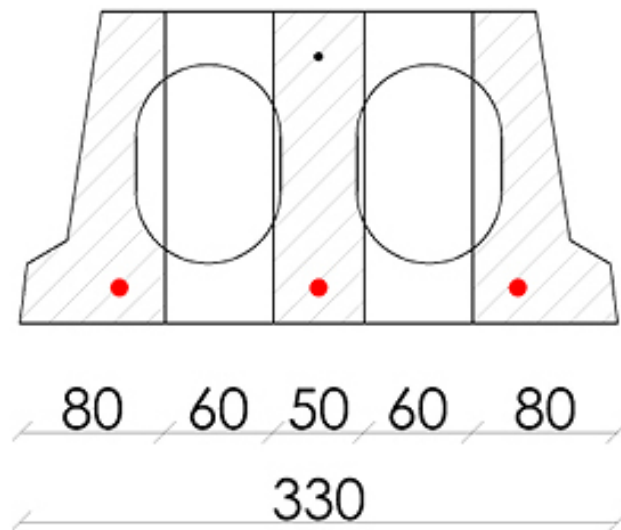


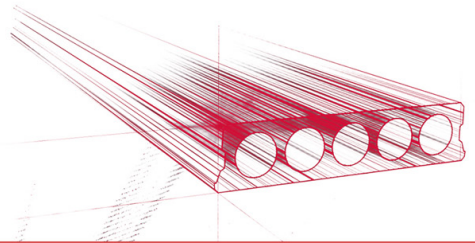
Spannweiten

Zie hiervoor onze online rekenmodule

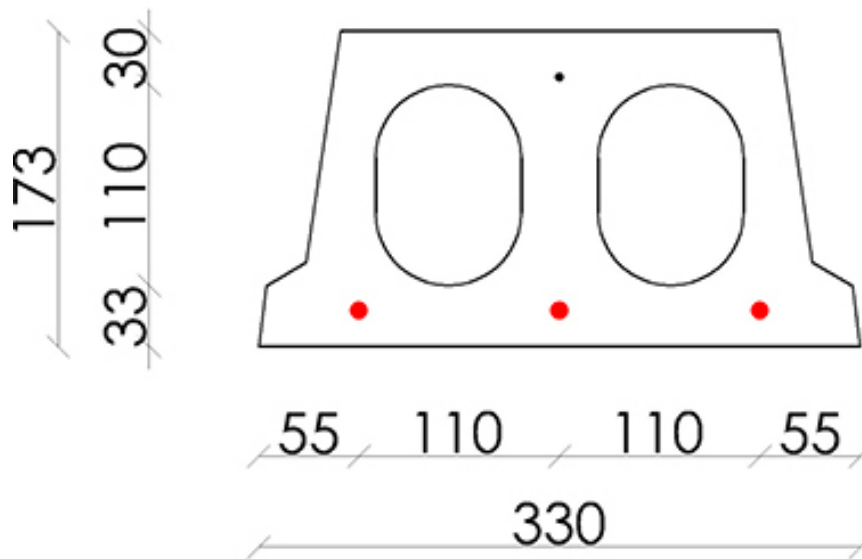


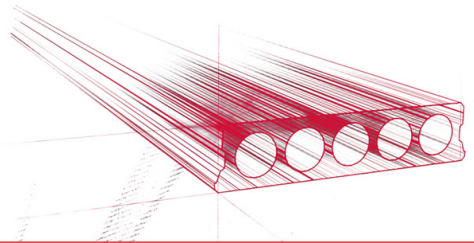
Bohrvorschriften



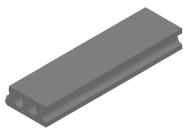


Bewehrungspositionen

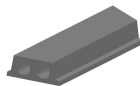




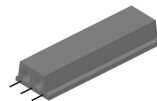
Zubehör



Passplatten - Stahlbeton-Hohlplatte



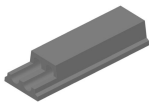
Schrägschnitte



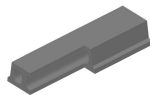
Ausstehende Bewehrung



Verjüngte Unterseite



Verjüngte Oberseite



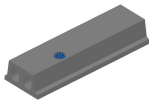
Eckaussparungen



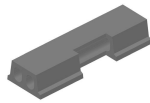
Kopfaussparung



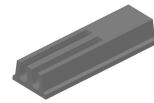
Rundaussparung



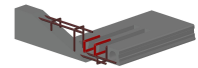
Rundaussparung + E-Dose



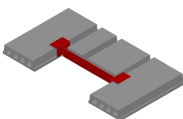
Randaussparung



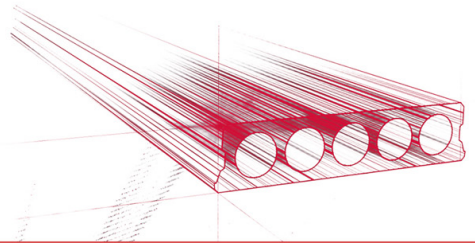
Geöffnete Hohlkammern



Open kanalen met inhangwapening



Wechseleisen
Stahlbeton-Hohlplatten



Vorrat

	Produktion	Abnehmbar	Vorrätig
Malle 1	X	X	X
Malle 2			
Frederickx			
Tessengerlo			

