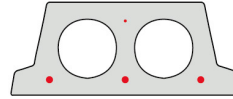


F130-330

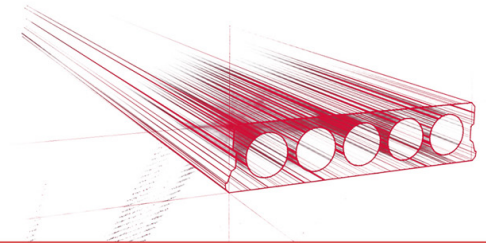


Technische Infos

Höhe (Dicke)	130mm
Breite	330mm
Länge	Wap. S700: 1,90m => 5,40m uit voorraad (per 10cm olopend)
Feuerwiderstand	1 uur (2u op bestelling)
Expositionsklasse	XC1; XC2; XC3 (andere op bestelling)
Transportgewicht	1,60 kN/m ²
Gewicht /m	0,53 kN/m
Bemessungsgewicht	2,15 kN/m ² (incl. voegvulling)
Hohlraumfüllung	5,41 l/m
Füllbeton	22 l/m ²
Betongüte	C 40/50

Keurmerken



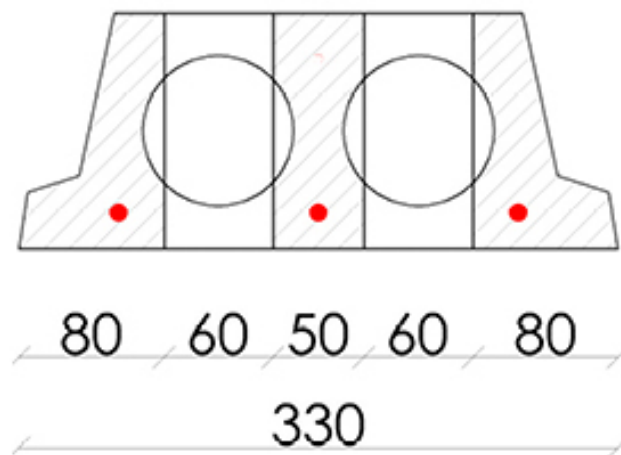


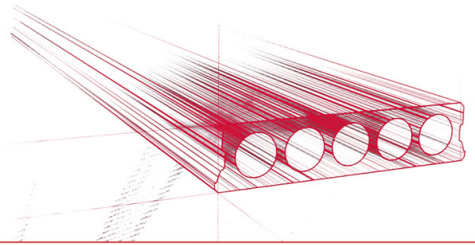
Spannweiten

Zie hiervoor onze online rekenmodule

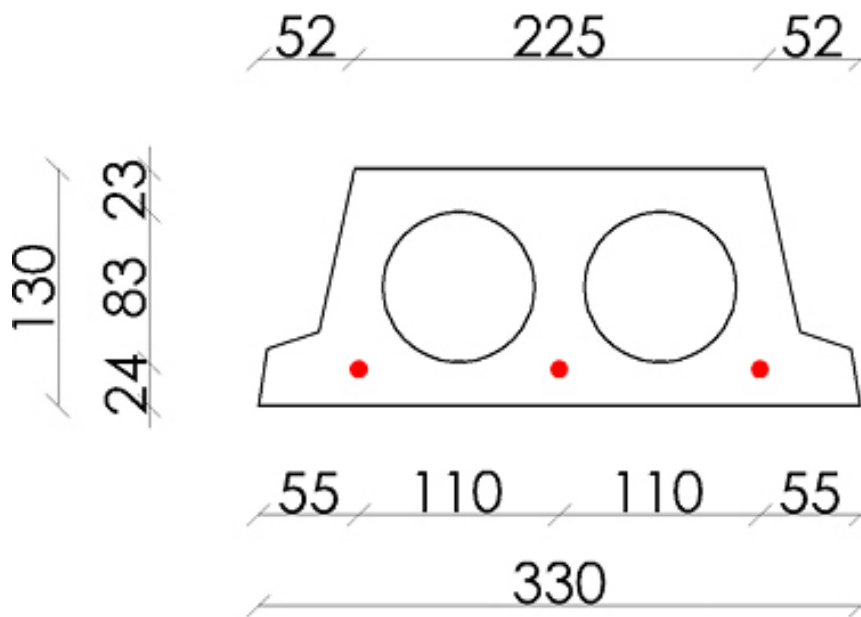


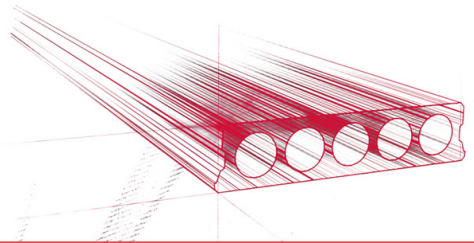
Bohrvorschriften



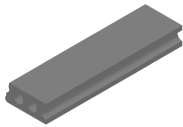


Bewehrungspositionen





Zubehör



Passplatten - Stahlbeton-Hohlplatte



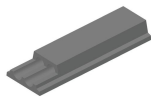
Schrägschnitte



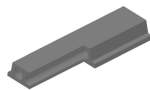
Ausstehende Bewehrung



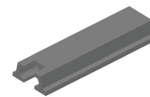
Verjüngte Unterseite



Verjüngte Oberseite



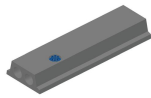
Eckaussparungen



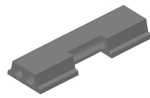
Kopfaussparung



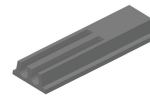
Rundaussparung



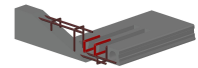
Rundaussparung + E-Dose



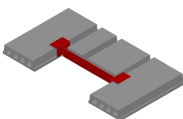
Randaussparung



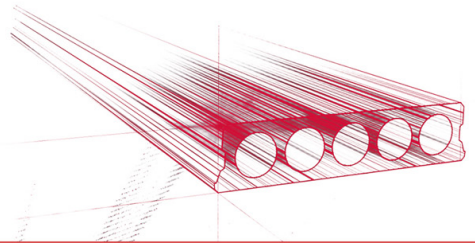
Geöffnete Hohlkammern



Open kanalen met inhangwapening



Wechseleisen
Stahlbeton-Hohlplatten



Vorrat

	Produktion	Abnehmbar	Vorrätig
Malle 1	X	X	X
Malle 2			
Frederickx			
Tessengerlo			

