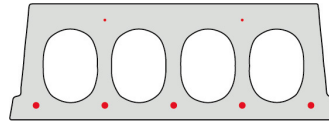


F170-500

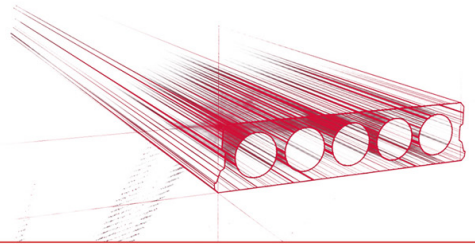


Technische Infos

Höhe (Dicke)	173mm
Breite	500mm
Länge	Wap. S350: 2,50m => 6,20m uit voorraad (per 10cm olopend) Wap. S700: 2,00m => 6,20m uit voorraad (per 10cm olopend)
Feuerwiderstand	1 uur (2u op bestelling) of REI60
Expositionsklasse	XC1; XC2; XC3 (andere op bestelling)
Transportgewicht	2,25 kN/m ²
Gewicht /m	1,13 kN/m
Bemessungsgewicht	2,60 kN/m ² (incl. voegvulling)
Hohlraumfüllung	7,43 l/m
Füllbeton	11 l/m ²

Keurmerken



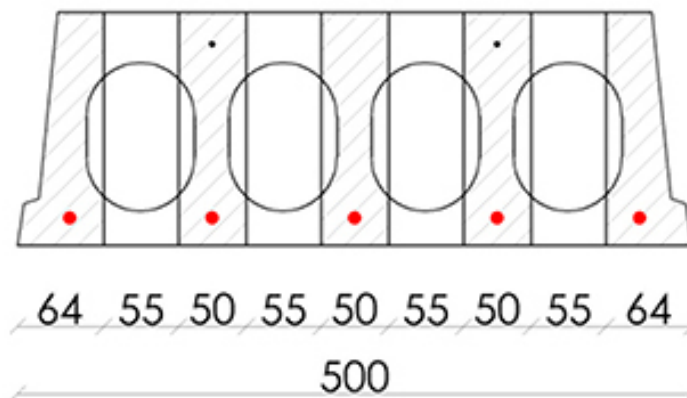


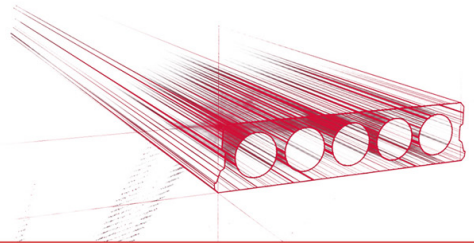
Spannweiten

Zie hiervoor onze online rekenmodule

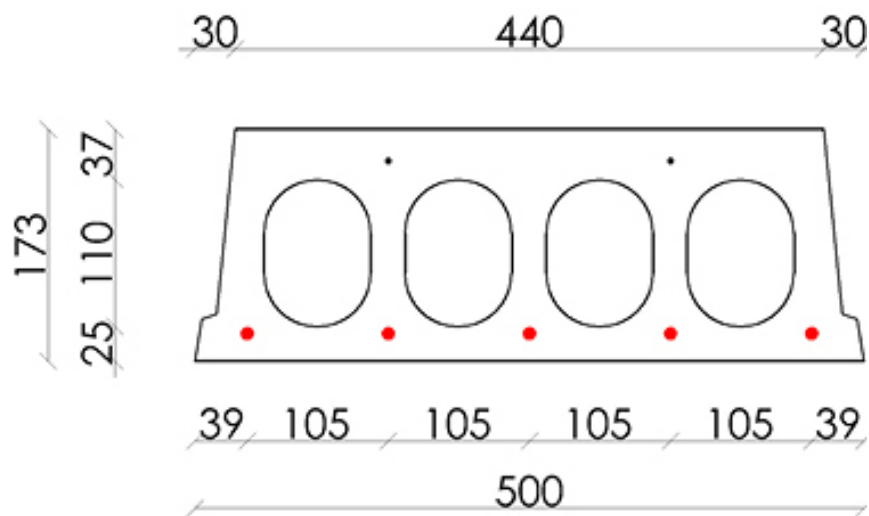


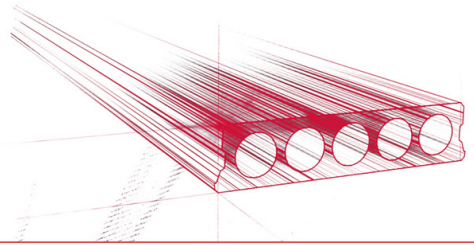
Bohrvorschriften



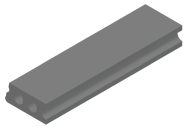


Bewehrungspositionen

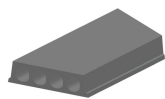




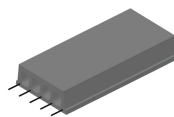
Zubehör



Passplatten - Stahlbeton-Hohlplatte



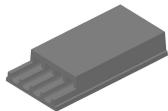
Schrägschnitte



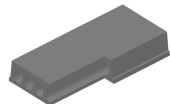
Ausstehende Bewehrung



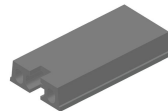
Verjüngte Unterseite



Verjüngte Oberseite



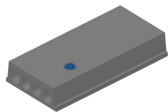
Eckaussparungen



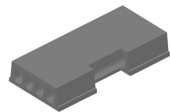
Kopfaussparung



Rundaussparung



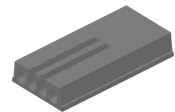
Rundaussparung + E-Dose



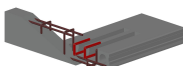
Randaussparung



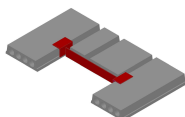
Ausnehmungen zur Plattenkopplung



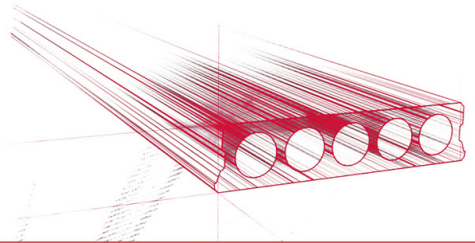
Geöffnete Hohlkammern



Open kanalen met inhangwapening



Wechseleisen Stahlbeton-Hohlplatten



Vorrat

	Produktion	Abnehmbar	Vorrätig
Malle 1	X	X	X
Malle 2			
Frederickx			
Tessengerlo			

