

FD320-1200-4C



Technische Infos

Höhe (Dicke)	320mm
Breite	1200mm
Feuerwiderstand	1 Stunde (2 Stunden auf Anfrage)
Expositionsklasse	XC1, XC2, XC3 (andere auf Anfrage)
Transportgewicht	4,29 kN/m ²
Gewicht /m	5,15 kN/m
Bemessungsgewicht	4,55 kN/m ² (inklusive Füllbeton)
Hohlraumfüllung	44,59 l/m
Füllbeton	10,30 l/m ²
Betongüte	C 50/60
Stahlqualität	f(pk) 1860

Keurmerken



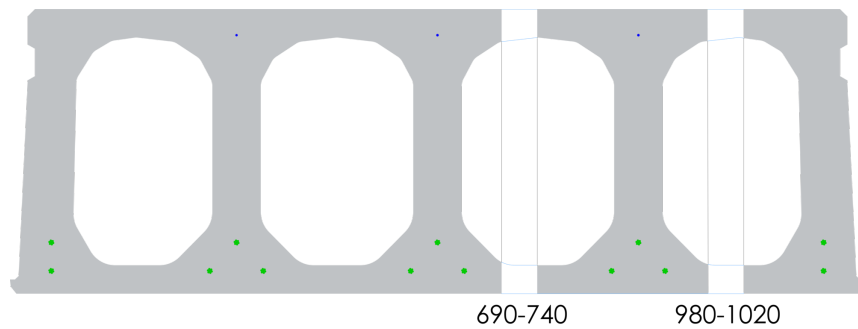


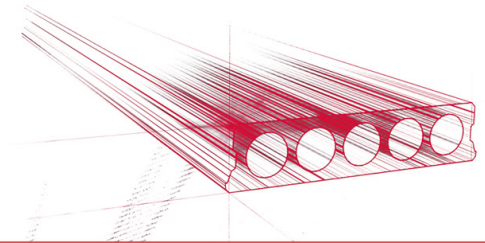
Spanweiten

Zie hiervoor onze online rekenmodule

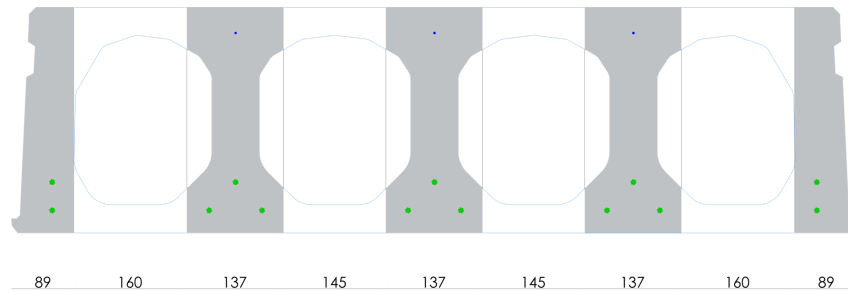


Passplatten

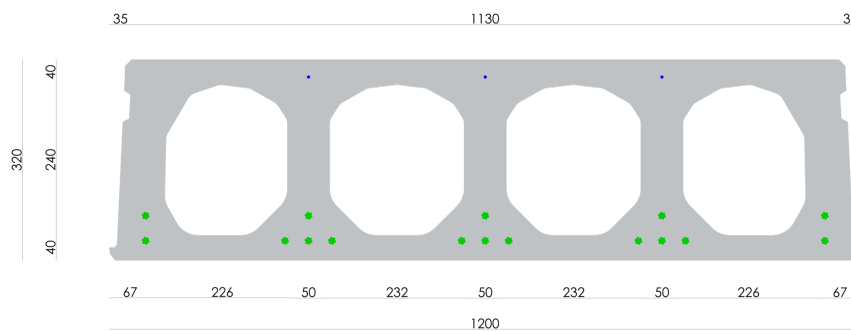


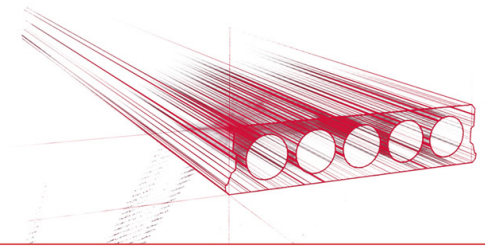


Bohrvorschriften



Bewehrungspositionen





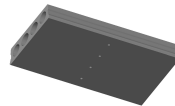
Zubehör



Koppelsparung
(hamerkop)



Passplatten -
Spannbeton-Hohlplatte



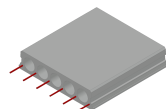
Entwässerungsöffnungen



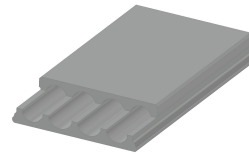
Schrägschnitte



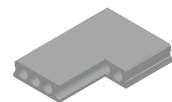
Hubschlaufen



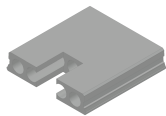
Ausstehende Bewehrung



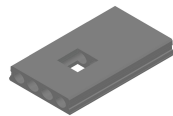
Verjüngte Oberseite



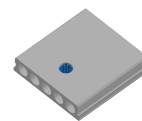
Eckausparungen



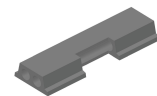
Kopfausparung



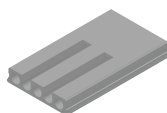
Mittelausparung



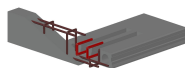
Rundausparung + E-
Dose



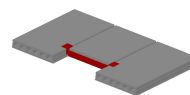
Randausparung



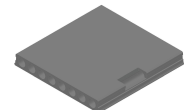
Geöffnete Hohlkammern



Open kanalen met
inhangwapening



Wechseleisen
Spannbeton-Hohlplatten



Vertiefte Ausparungen



Vorrat

	Produktion	Abnehmbar	Vorrätig
Malle 1			
Malle 2			
Frederickx			
Tessenderlo	X	X	

