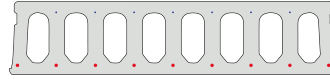


FD265-1200-8C

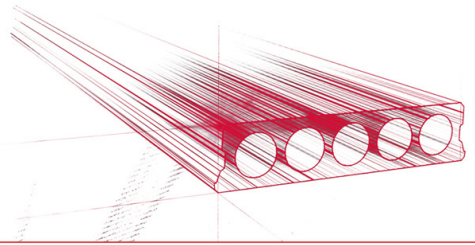


Technische Infos

Höhe (Dicke)	265mm
Breite	1200mm
Breite	1 Stunde (2 Stunden auf Bestellung)
Expositionsklasse	XC1; XC2; XC3 (andere auf Anfrage)
Transportgewicht	3,90 kN/m ²
Gewicht /m	4,68 kN/m
Bemessungsgewicht	4,11 kN/m ² (inklusive Füllbeton)
Hohlraumfüllung	14,54 l/m
Füllbeton	8,2l/m ²
Betongüte	C50/60
Stahlqualität	f(pk)1860

Keurmerken



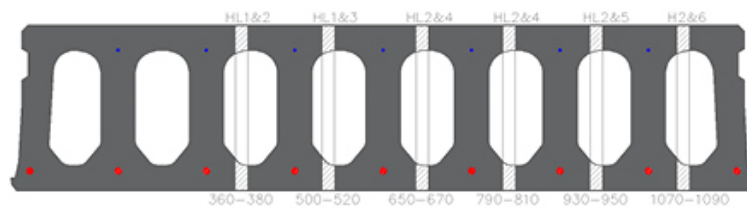


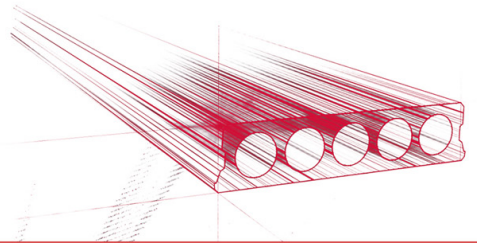
Spanweiten

Zie hiervoor onze online rekenmodule

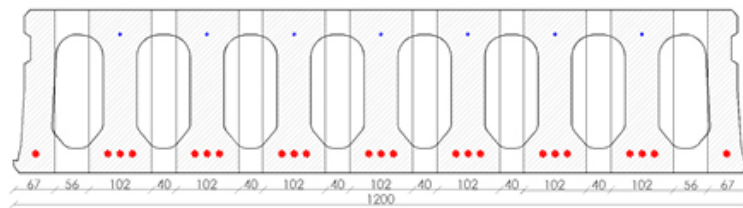


Passplatten



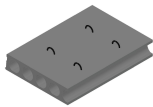


Bohrvorschriften

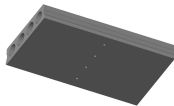




Zubehör



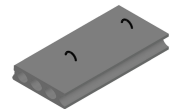
Passplatten -
Spannbeton-Hohlplatte



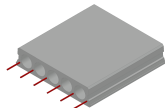
Entwässerungsöffnungen



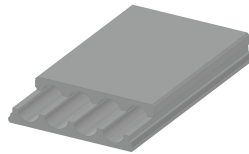
Schrägschnitte



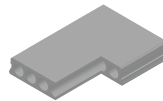
Hubschlaufen



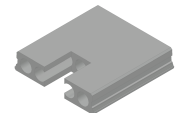
Ausstehende Bewehrung



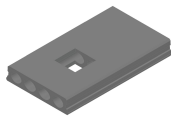
Verjüngte Oberseite



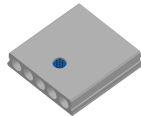
Eckausparungen



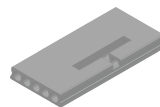
Kopfausparung



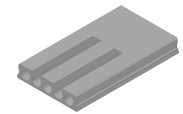
Mittelausparung



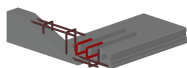
Rundausparung + E-
Dose



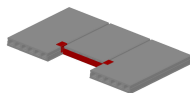
Ausnehmungen zur
Plattenkopplung



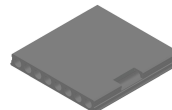
Geöffnete Hohlkammern



Open kanalen met
inhangwapening



Wechseleisen
Spannbeton-Hohlplatten



Vertiefte Ausparungen



Vorrat

	Produktion	Abnehmbar	Vorrätig
Malle 1			
Malle 2			
Frederickx			
Tessenderlo	X	X	

