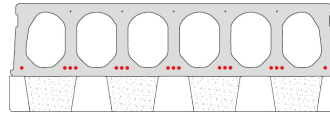


FS265-1200ISO

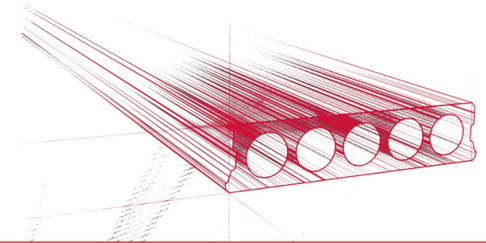


Technische Infos

Höhe (Dicke)	265mm
Breite	1200mm
Feuerwiderstand	1 Stunde (2 Stunden auf Anfrage)
Expositionsklasse	XC1, XC2, XC3 (andere auf Anfrage)
Transportgewicht	3,35 kN/m ² (excl. nokken)
Gewicht /m	4,02 kN/m ²
Bemessungsgewicht	3,55 kN/m ² (inklusive Füllbeton)
Hohlraumfüllung	26,2 l/m
Füllbeton	8,2 l/m ²
Betongüte	C50/60
Stahlqualität	f(pk)1860; f(p0,1k)1580
Konstruktionshöhe Rc=4.0 m ² K/W	265 + 130 = 395 mm
Konstruktionshöhe RC=5.0m ² K/W	265 + 150 = 415 mm

Keurmerken



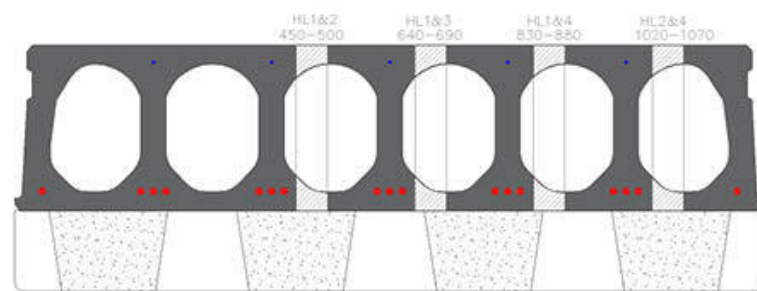


Spannweiten

Zie hiervoor onze online rekenmodule

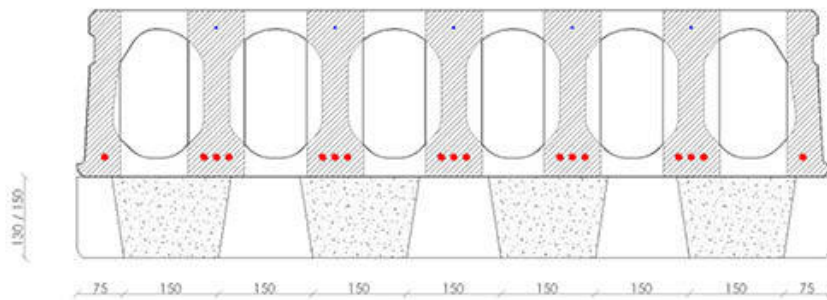


Passplatten

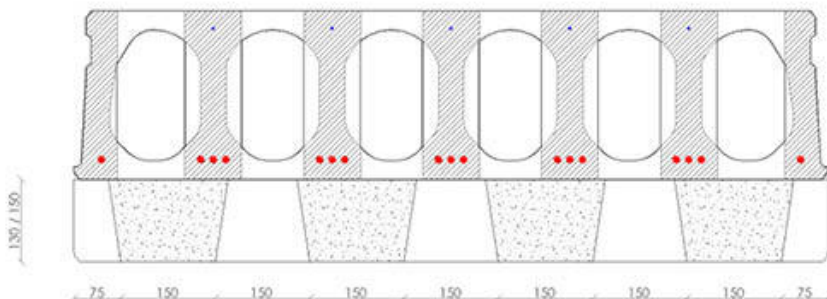


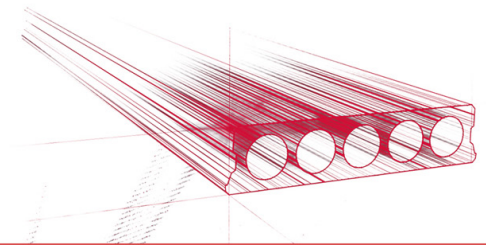


Bohrvorschriften

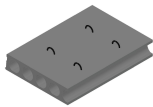


Bewehrungspositionen





Zubehör



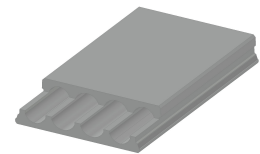
Passplatten -
Spannbeton-Hohlplatte



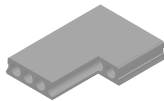
Schrägschnitte



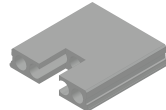
Hubschlaufen



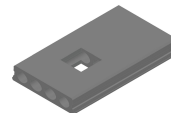
Verjüngte Oberseite



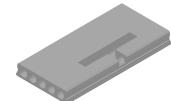
Eckaussparungen



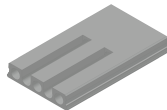
Kopfaussparung



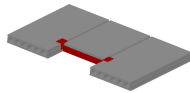
Mittelaussparung



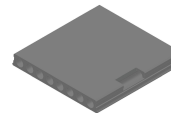
Ausnehmungen zur
Plattenkopplung



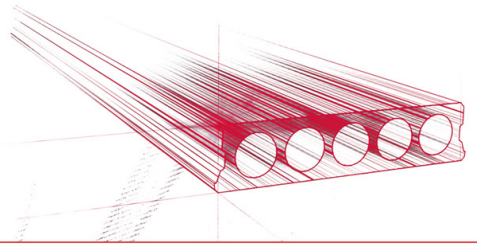
Geöffnete Hohlkammern



Wechseleisen
Spannbeton-Hohlplatten



Vertiefte Aussparungen



Vorrat

	Produktion	Abnehmbar	Vorrätig
Malle 1			
Malle 2	X	X	
Frederickx			
Tessengerlo			

