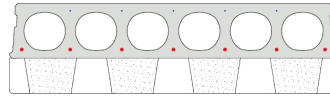


# FS200-1200ISO

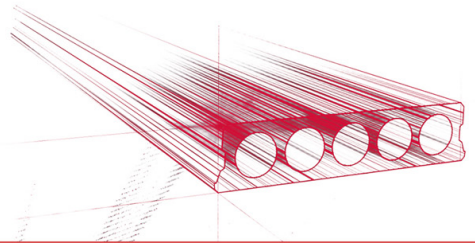


## Technische Infos

Höhe (Dicke)	200mm
Breite	1200mm
Feuerwiderstand	1 Stunde (2 Stunden auf Anfrage)
Expositionsklasse	XC1, XC2, XC3 (andere auf Anfrage)
Transportgewicht	2.71 kN/m <sup>2</sup> (excl. nokken)
Gewicht /m	3,25 kN/m
Bemessungsgewicht	2,85 kN/m <sup>2</sup> (inklusive Füllbeton)
Hohlraumfüllung	17,5 l/m
Füllbeton	5,7 l/m <sup>2</sup>
Betongüte	C50/60
Stahlqualität	f(pk)1860; f(p0,1k)1580
Konstruktionshöhe Rc=4.0 m <sup>2</sup> K/W	200 + 130 = 330 mm
Konstruktionshöhe RC=5.0m <sup>2</sup> K/W	200 + 150 = 350 mm

## Keurmerken





## Spanweiten

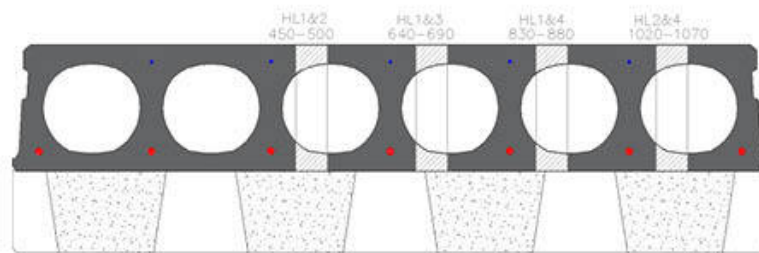
---

Zie hiervoor onze online rekenmodule



## Passplatten

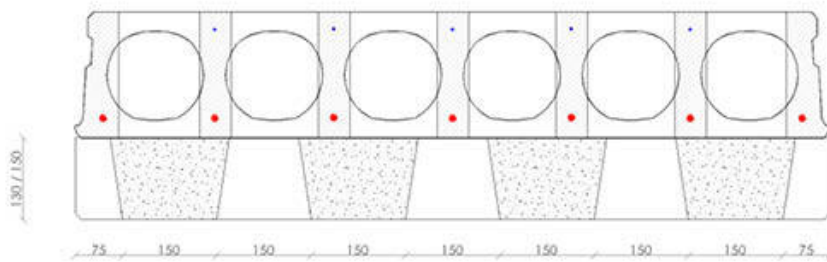
---





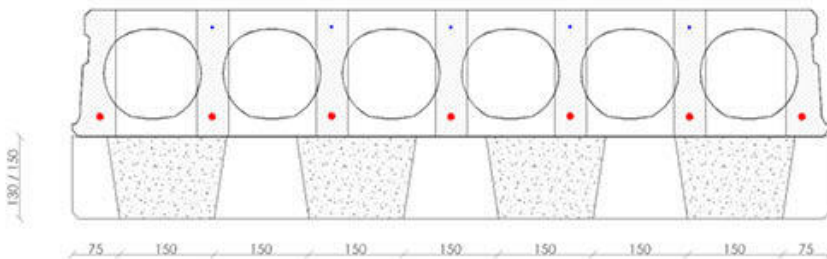
## Bohrvorschriften

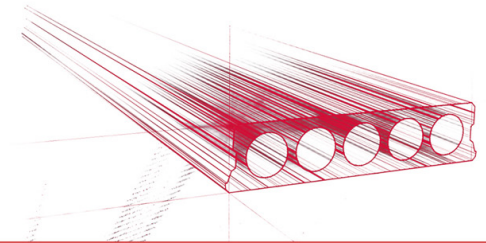
---



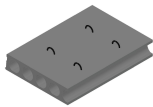
## Bewehrungspositionen

---





## Zubehör



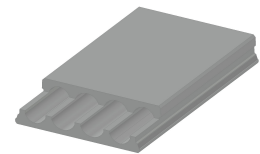
Passplatten -  
Spannbeton-Hohlplatte



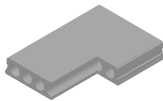
Schrägschnitte



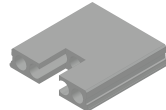
Hubschlaufen



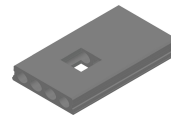
Verjüngte Oberseite



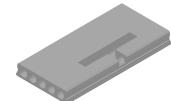
Eckaussparungen



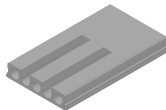
Kopfaussparung



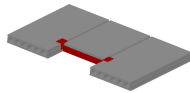
Mittelaussparung



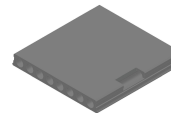
Ausnehmungen zur  
Plattenkopplung



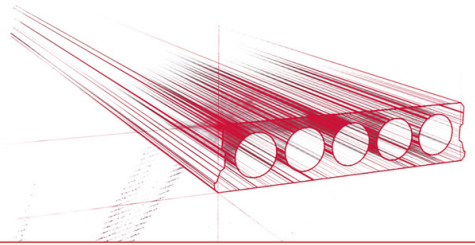
Geöffnete Hohlkammern



Wechseleisen  
Spannbeton-Hohlplatten



Vertiefte Aussparungen



## Vorrat

	Produktion	Abnehmbar	Vorrätig
Malle 1			
Malle 2	X	X	
Frederickx			
Tessengerlo			

