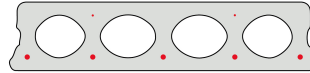


# FS130-600

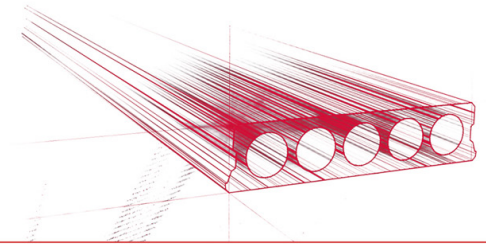


## Technische Infos

Höhe (Dicke)	130mm
Breite	596mm
Länge	Wap. S500: 2,00m => 2,50m uit voorraad (per 10cm olopend) Wap. S500: 2,55m => 5,95m uit voorraad (per 5 cm olopend) Wap. S500: 6,00m => 6,50m uit voorraad (per 10cm olopend)
Feuerwiderstand	1 uur
Expositionsklasse	XC1, XC2, XC3 (andere op bestelling)
Transportgewicht	1,92 kN/m <sup>2</sup>
Gewicht /m	1,15 kN/m
Bemessungsgewicht	2,06 kN/m <sup>2</sup> (incl. voegvulling)
Hohlraumfüllung	7,18 l/m
Füllbeton	5,8l/m <sup>2</sup>
Betongüte	C 50/60
Stahlqualität	f(pk) 1860;f(pk) 1920; f(p0,1k) 1580

## Keurmerken





## Spannweiten

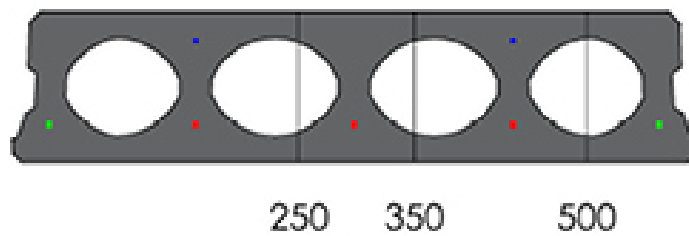
---

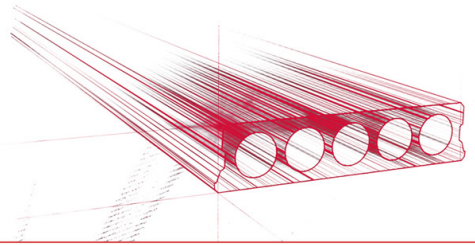
Zie hiervoor onze online rekenmodule



## Passplatten

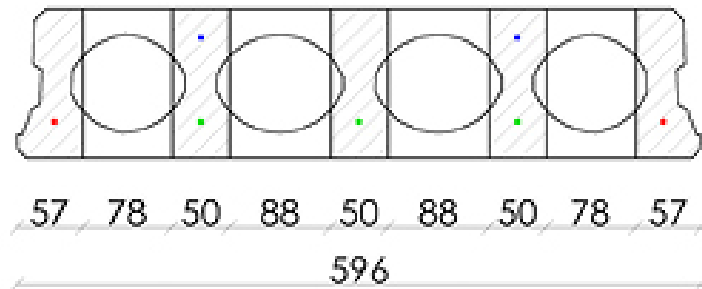
---

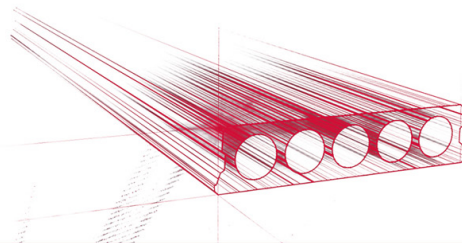




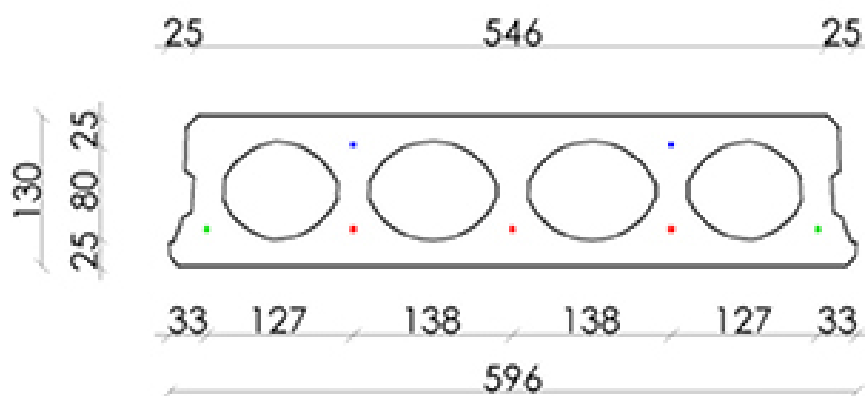
## Bohrvorschriften

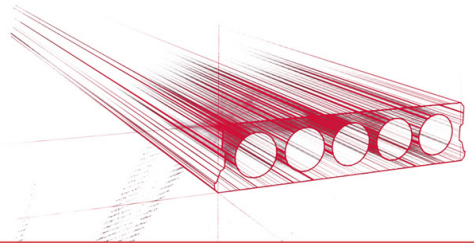
---



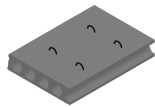


## Bewehrungspositionen

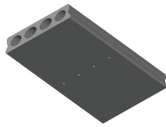




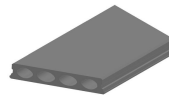
## Zubehör



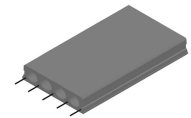
Passplatten -  
Spannbeton-Hohlplatte



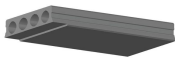
Entwässerungsöffnungen



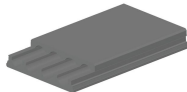
Schrägschnitte



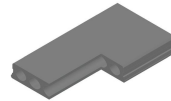
Ausstehende Bewehrung



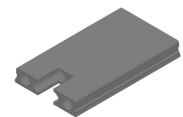
Verjüngte Unterseite



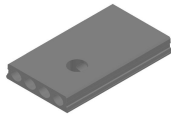
Verjüngte Oberseite



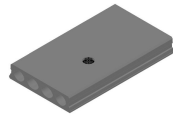
Eckausparungen



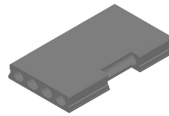
Kopfausparung



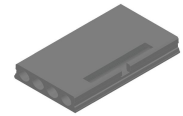
Rundaussparung



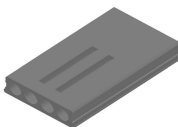
Rundaussparung + E-  
Dose



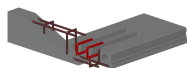
Randaussparung



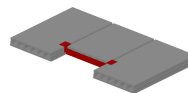
Ausnehmungen zur  
Plattenkopplung



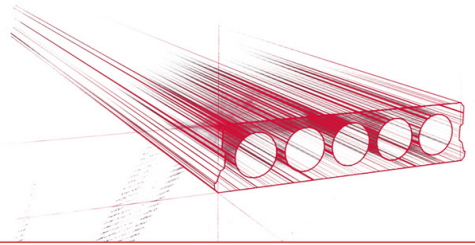
Geöffnete Hohlkammern



Open kanalen met  
inhangwapening



Wechseleisen  
Spannbeton-Hohlplatten



## Vorrat

	Produktion	Abnehmbar	Vorrätig
Malle 1			
Malle 2			
Frederickx		X	X
Tessenderlo	X	X	X

