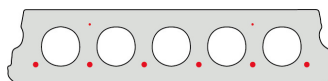


F130-600

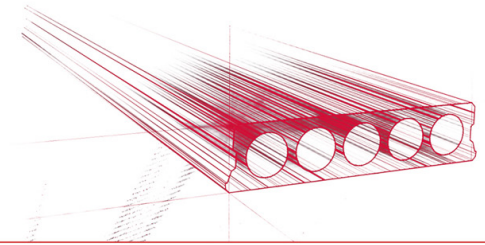


Technische Infos

Höhe (Dicke)	130mm
Breite	600mm
Länge	Wap. S350: 0,70m => 5,20m uit voorraad (per 10cm olopend) Wap. S700: 1,90m => 5,20m uit voorraad (per 10cm olopend)
Feuerwiderstand	1 uur (2u op bestelling)
Expositionsklasse	XC1; XC2; XC3 (andere op bestelling)
Transportgewicht	2,12 kN/m ²
Gewicht /m	1,27 kN/m
Bemessungsgewicht	2,30 kN/m ² (incl. voegvulling)
Hohlraumfüllung	3,85 l/m
Füllbeton	7 l/m ²
Betongüte	C 40/50
Stahlqualität	f(yk) 500; f(tk) 550

Keurmerken



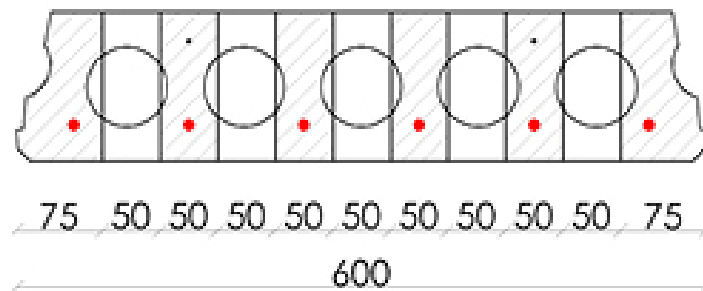


Spannweiten

Zie hiervoor onze online rekenmodule

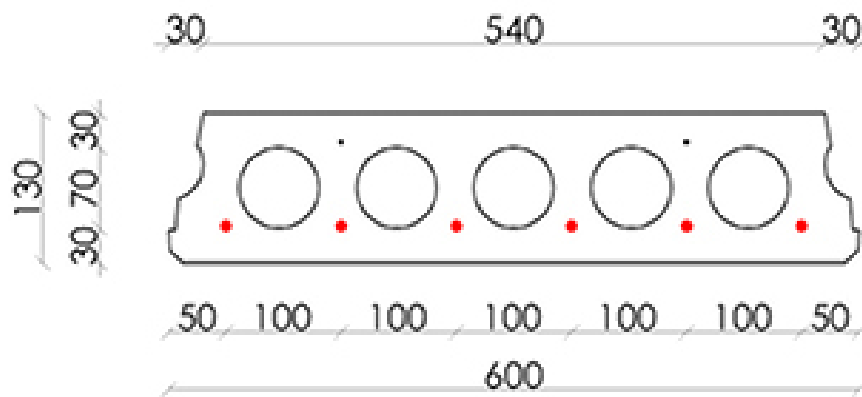


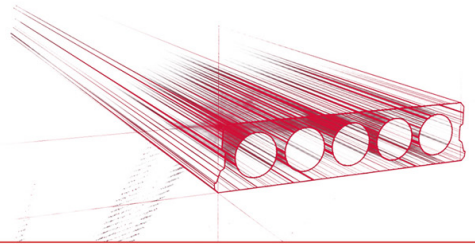
Bohrvorschriften



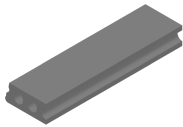


Bewehrungspositionen

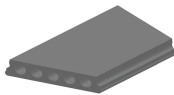




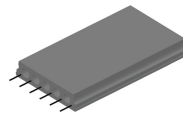
Zubehör



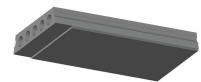
Passplatten - Stahlbeton-Hohlplatte



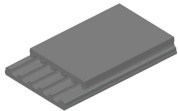
Schrägschnitte



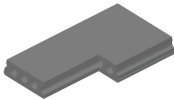
Ausstehende Bewehrung



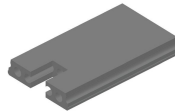
Verjüngte Unterseite



Verjüngte Oberseite



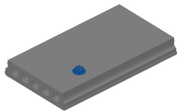
Eckaussparungen



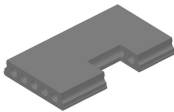
Kopfaussparung



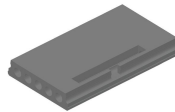
Rundaussparung



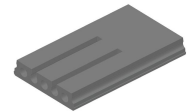
Rundaussparung + E-Dose



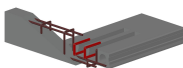
Randaussparung



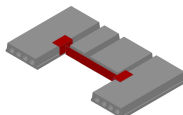
Ausnehmungen zur Plattenkopplung



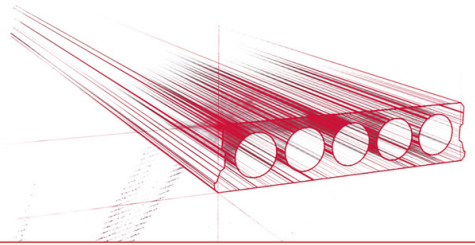
Geöffnete Hohlkammern



Open kanalen met inhangwapening



Wechseleisen Stahlbeton-Hohlplatten



Vorrat

	Produktion	Abnehmbar	Vorrätig
Malle 1	X	X	X
Malle 2			
Frederickx			
Tessengerlo			

