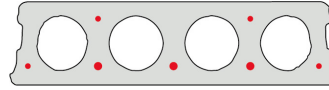


FS150-600

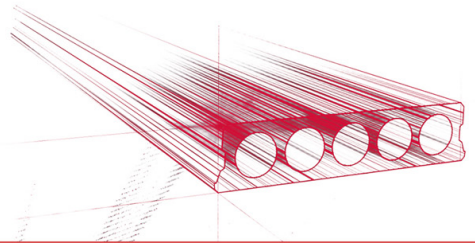


Technische Infos

Höhe (Dicke)	150mm
Breite	596mm
Länge	Malle 1 : Wap. S500: 3,40m => 4,90m op voorraad (per 10cm oplopend) Tessengerlo: Wap. S500: 3,40m => 4,90m op bestelling (per 10cm oplopend) Wap. S500: 5,00m => 7,00m uit voorraad (per 10 cm oplopend)
Feuerwiderstand	1 uur (2u op bestelling)
Expositionsklasse	XC1; XC2; XC3 (andere op bestelling)
Transportgewicht	2,38 kN/m ²
Gewicht /m	1,43 kN/m
Bemessungsgewicht	2,55 kN/m ² (incl. voegvulling)
Hohlraumfüllung	7,85 l/m
Füllbeton	6,7 l/m ²
Betongüte	C 50/60
Stahlqualität	f(pk) 1860; f(p0,1k) 1580

Keurmerken

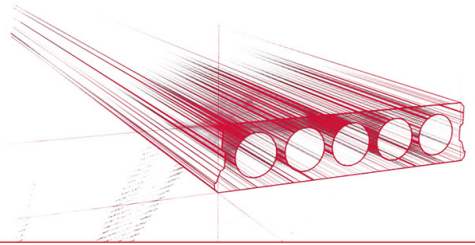




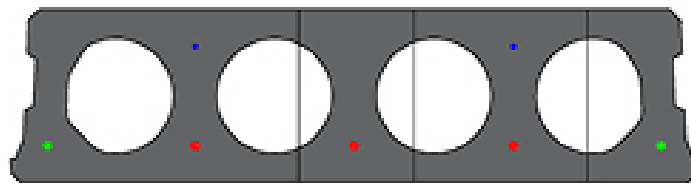
Spannweiten

Zie hiervoor onze online rekenmodule

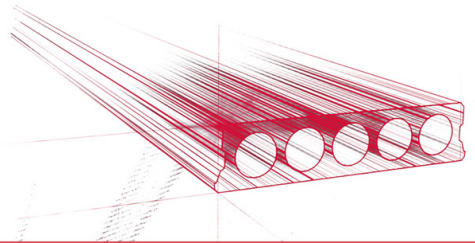




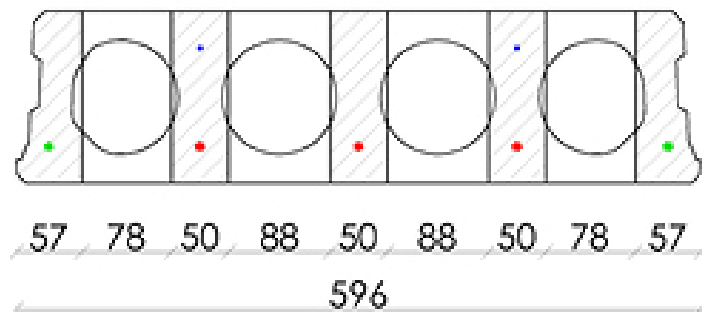
Passplatten

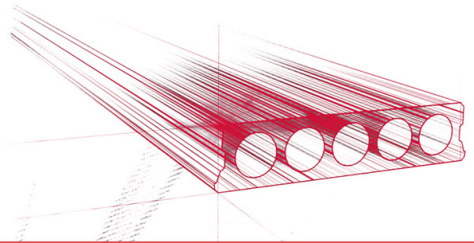


250 350 500

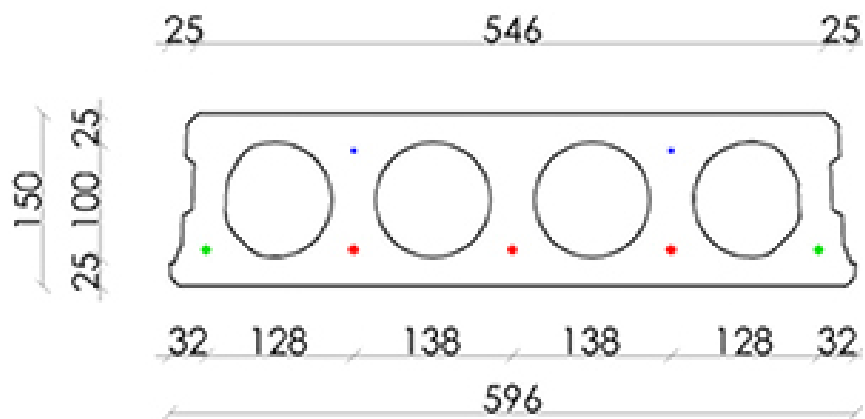


Bohrvorschriften

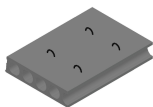




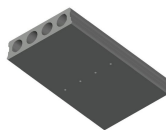
Bewehrungspositionen



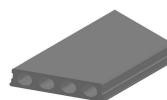
Zubehör



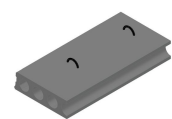
Passplatten -
Spannbeton-Hohlplatte



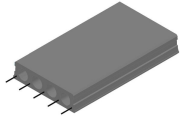
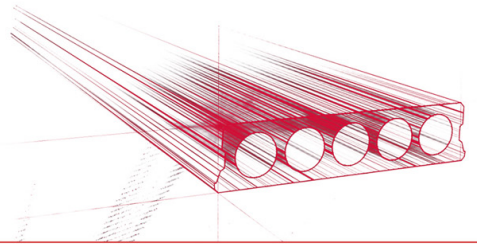
Entwässerungsöffnungen



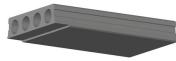
Schrägschnitte



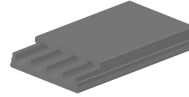
Hubschlaufen



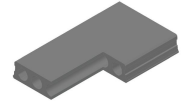
Ausstehende Bewehrung



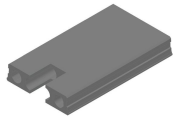
Verjüngte Unterseite



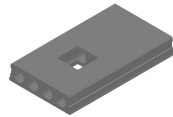
Verjüngte Oberseite



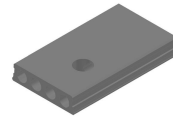
Eckaussparungen



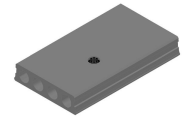
Kopfaussparung



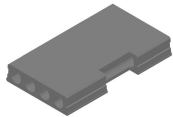
Mittelaussparung



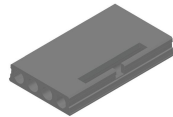
Rundaussparung



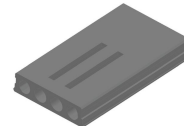
Rundaussparung + E-Dose



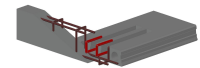
Randaussparung



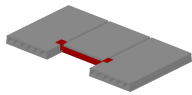
Ausnehmungen zur Plattenkopplung



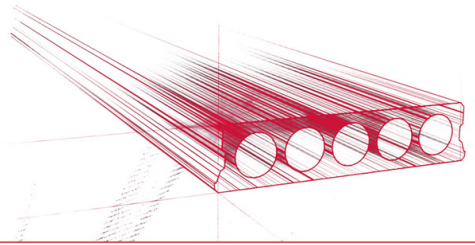
Geöffnete Hohlkammern



Open kanalen met inhangwapening



Wechseleisen
Spannbeton-Hohlplatten



Vorrat

	Produktion	Abnehmbar	Vorrätig
Malle 1		X	X
Malle 2	X	X	
Frederickx			
Tessenderlo	X	X	X

