

# FD200-1200-8C

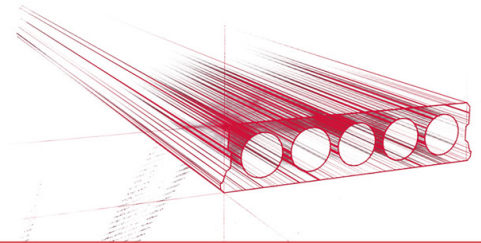


## Technische Infos

Höhe (Dicke)	200mm
Breite	1200mm
Feuerwiderstand	1 Stunde (2 Stunden auf Bestellung)
Expositionsklasse	XC1; XC2; XC3 (andere auf Anfrage)
Transportgewicht	3,20 kN/m <sup>2</sup>
Gewicht /m	3,84 kN/m
Bemessungsgewicht	3,34 kN/m <sup>2</sup> (inklusive Füllbeton)
Hohlraumfüllung	10,26 l/m
Füllbeton	5,7 l/m <sup>2</sup>
Betongüte	C50/60
Stahlqualität	f(pk)1860

## Keurmerken





## Spannweiten

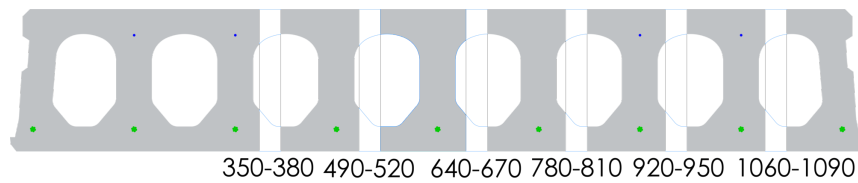
---

Zie hiervoor onze online rekenmodule



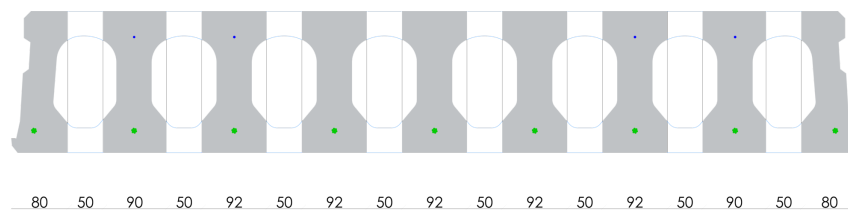
## Passplatten

---



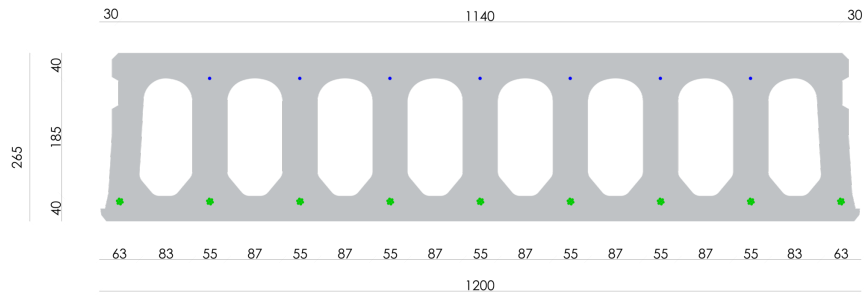
## Bohrvorschriften

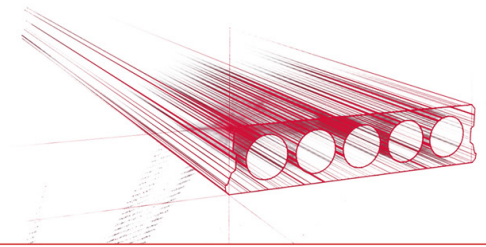
---





## Bewehrungspositionen

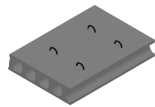




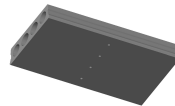
## Zubehör



Koppelsparung  
(hamerkop)



Passplatten -  
Spannbeton-Hohlplatte



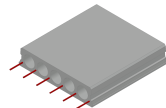
Entwässerungsöffnungen



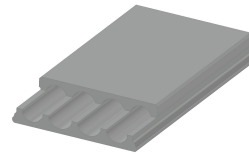
Schrägschnitte



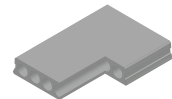
Hubschlaufen



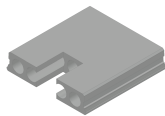
Ausstehende Bewehrung



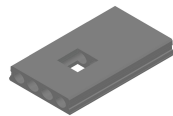
Verjüngte Oberseite



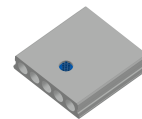
Eckausparungen



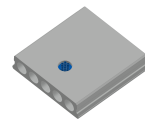
Kopfausparung



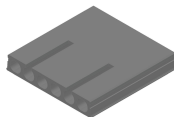
Mittelausparung



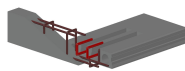
Rundausparung



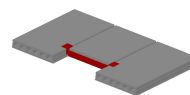
Rundausparung + E-  
Dose



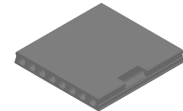
Geöffnete Hohlkammern



Open kanalen met  
inhangwapening



Wechseleisen  
Spannbeton-Hohlplatten



Vertiefte Ausparungen



## Vorrat

	Produktion	Abnehmbar	Vorrätig
Malle 1			
Malle 2			
Frederickx			
Tessenderlo	X	X	

