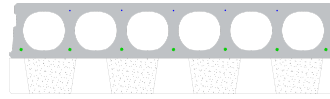


FS200-1200ISO

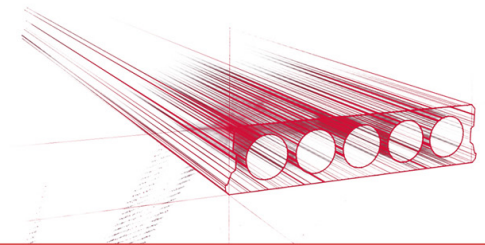


Technische Infos

Höhe (Dicke)	200mm
Breite	1200mm
Feuerwiderstand	1 Stunde (2 Stunden auf Anfrage)
Expositionsklasse	XC1, XC2, XC3 (andere auf Anfrage)
Transportgewicht	2.71 kN/m ² (excl. nokken)
Gewicht /m	3,25 kN/m
Bemessungsgewicht	2,85 kN/m ² (inklusive Füllbeton)
Hohlraumfüllung	17,5 l/m
Füllbeton	5,7 l/m ²
Betongüte	C50/60
Stahlqualität	f(pk)1860
Konstruktionshöhe Rc=4.0 m ² K/W	200 + 130 = 330 mm
Konstruktionshöhe RC=5.0m ² K/W	200 + 150 = 350 mm

Keurmerken



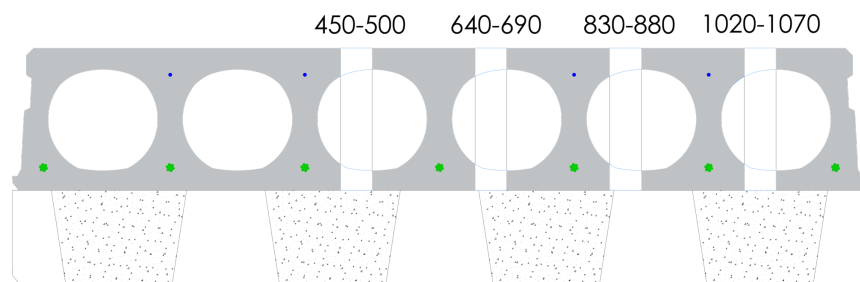


Spannweiten

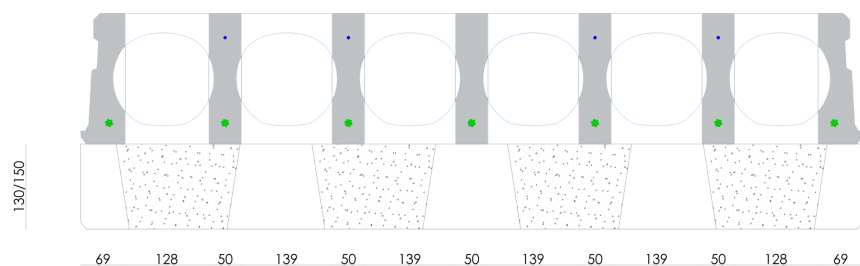
Zie hiervoor onze online rekenmodule



Passplatten

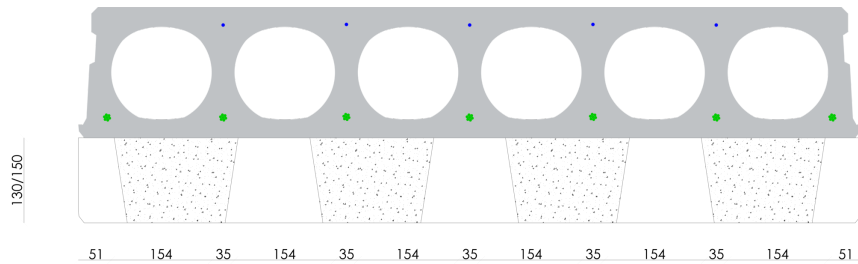


Bohrvorschriften

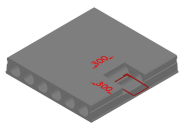




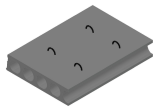
Bewehrungspositionen



Zubehör



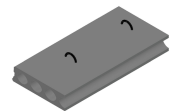
Koppelsparung
(hamerkop)



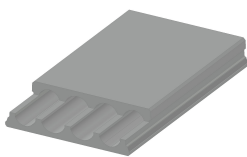
Passplatten -
Spannbeton-Hohlplatte



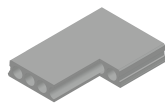
Schrägschnitte



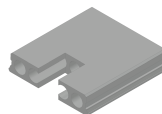
Hubschlaufen



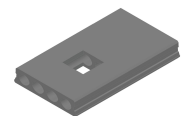
Verjüngte Oberseite



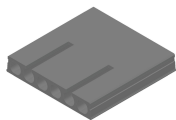
Eckaussparungen



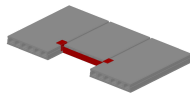
Kopfaussparung



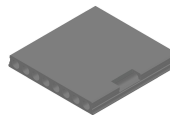
Mittelaussparung



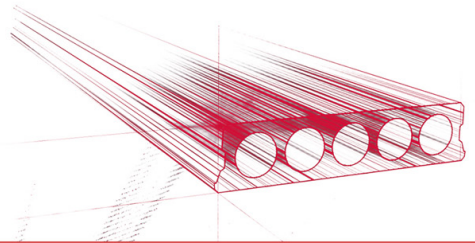
Geöffnete Hohlkammern



Wechseleisen
Spannbeton-Hohlplatten



Vertiefte Aussparungen



Vorrat

	Produktion	Abnehmbar	Vorrätig
Malle 1			
Malle 2	X	X	
Frederickx			
Tessenderlo			

