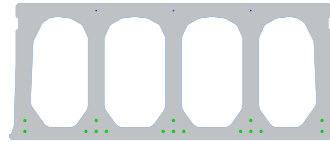


FS500-1200



Technische Infos

Höhe (Dicke)	500
Breite	1200
Feuerwiderstand	1 Stunde (2 Stunden auf Anfrage)
Expositionsklasse	XC1, XC2, XC3 (andere auf Anfrage)
Transportgewicht	5,50 kN/m ²
Gewicht /m	6,60 kN/m
Bemessungsgewicht	5,96 kN/m ² (inklusive Füllbeton)
Hohlraumfüllung	83,37 l/m
Füllbeton	18,80 l/m ²
Betongüte	C 50/60
Stahlqualität	f(pk) 1860

Keurmerken



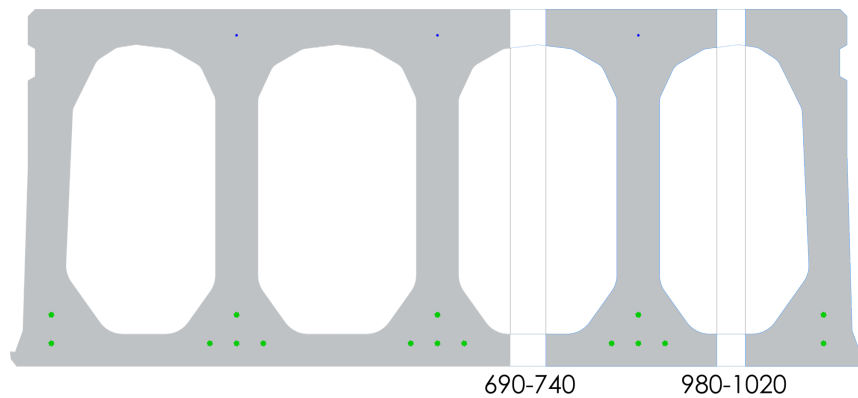


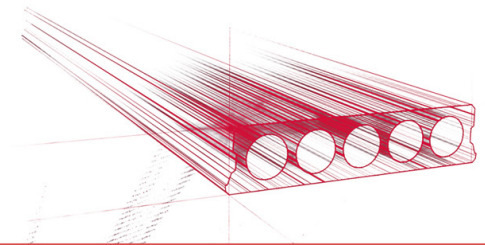
Spannweiten

Zie hiervoor onze online rekenmodule

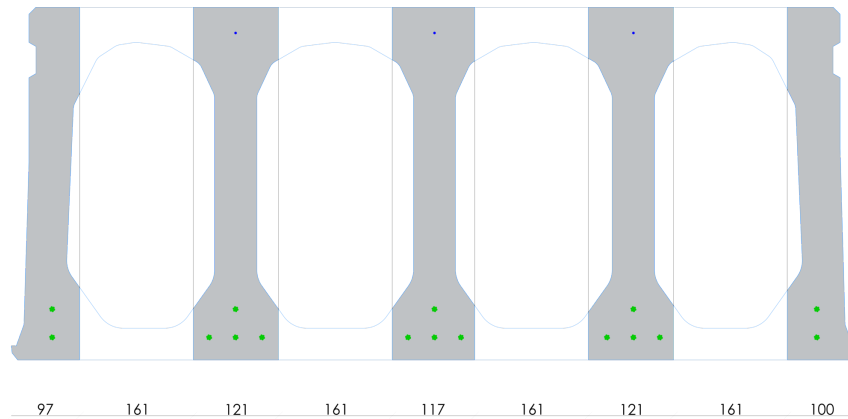


Passplatten

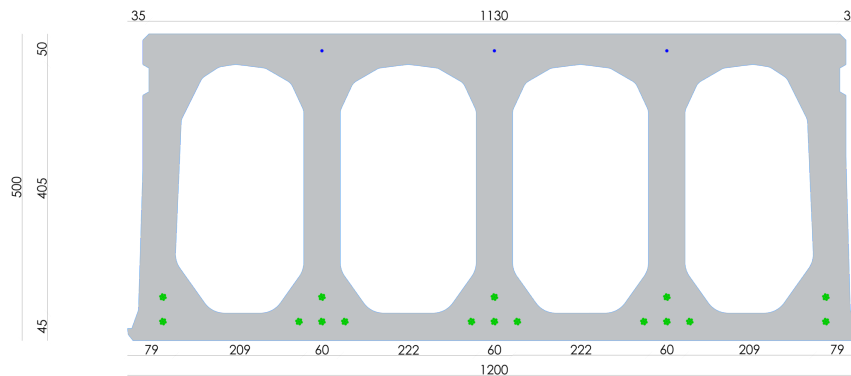


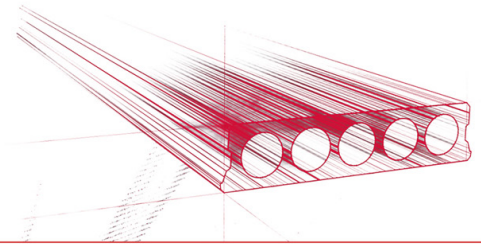


Bohrvorschriften

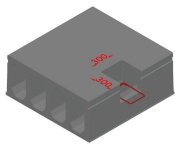


Bewehrungspositionen

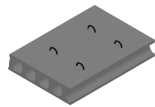




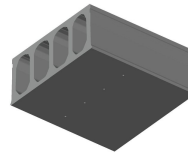
Zubehör



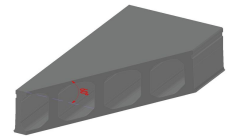
Koppelsparing
(hamerkop)



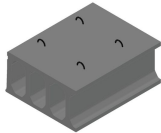
Passplatten -
Spannbeton-Hohlplatte



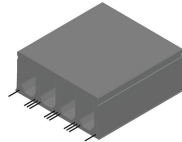
Entwässerungsöffnungen



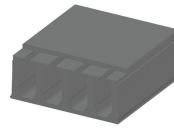
Schrägschnitte



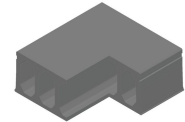
Hubschlaufen



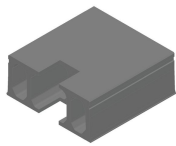
Ausstehende Bewehrung



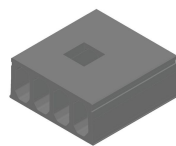
Verjüngte Oberseite



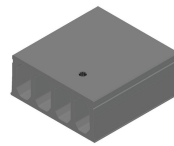
Eckausparungen



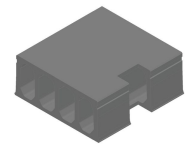
Kopfaussparung



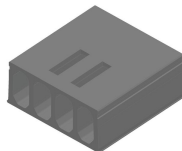
Mittelaussparung



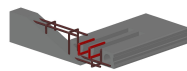
Rundaussparung + E-
Dose



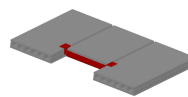
Randaussparung



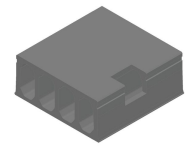
Geöffnete Hohlkammern



Open kanalen met
inhangwapening



Wechseleisen
Spannbeton-Hohlplatten



Vertiefte Aussparungen



Vorrat

	Produktion	Abnehmbar	Vorrätig
Malle 1			
Malle 2			
Frederickx			
Tessenderlo	X	X	

