

FS130-600



Technische Infos

| | |
|-------------------|--|
| Höhe (Dicke) | 130mm |
| Breite | 596mm |
| Länge | Wap. S500: 2,00m => 2,50m uit voorraad (per 10cm oplopend) Wap. S500: 2,55m => 5,95m uit voorraad (per 5 cm oplopend) Wap. S500: 6,00m => 6,50m uit voorraad (per 10cm oplopend) |
| Feuerwiderstand | 1 uur |
| Expositionsklasse | XC1, XC2, XC3 (andere op bestelling) |
| Transportgewicht | 1,92 kN/m ² |
| Gewicht /m | 1,15 kN/m |
| Bemessungsgewicht | 2,06 kN/m ² (incl. voegvulling) |
| Hohlraumfüllung | 7,18 l/m |
| Füllbeton | 5,8 l/m ² |
| Betongüte | C 50/60 |
| Stahlqualität | f(pk) 1860 vanaf 6,00 m |

Keurmerken



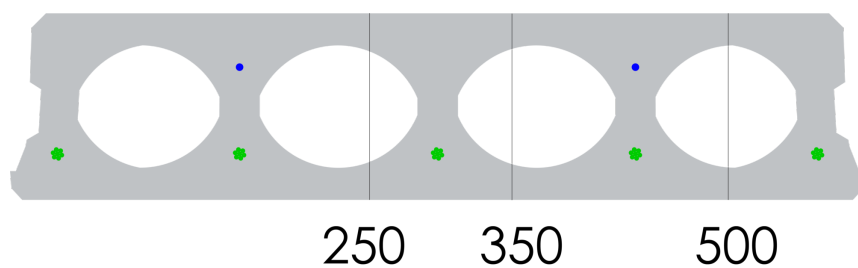


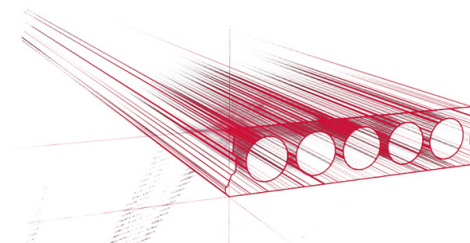
Spannweiten

Zie hiervoor onze online rekenmodule

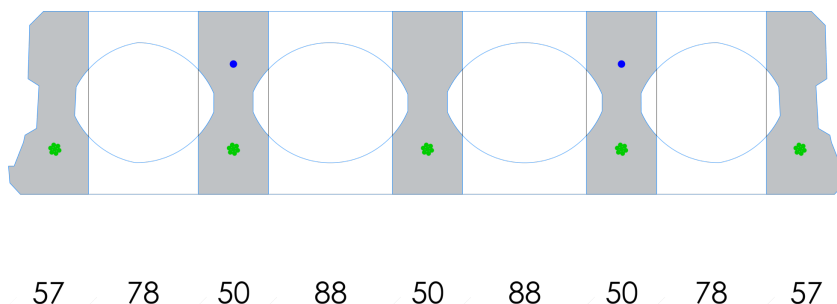


Passplatten

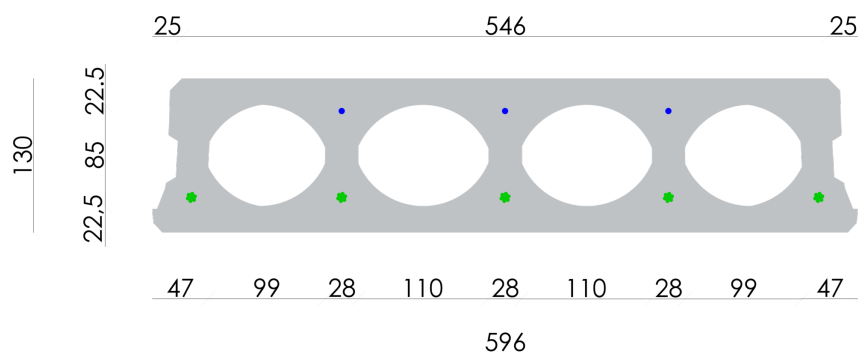


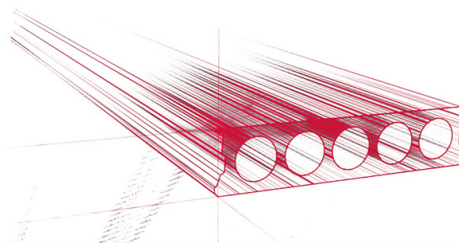


Bohrvorschriften

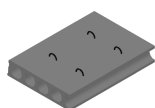


Bewehrungspositionen

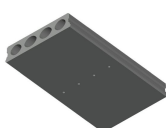




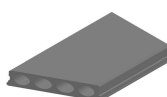
Zubehör



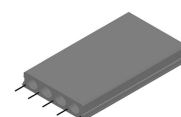
Passplatten -
Spannbeton-Hohlplatte



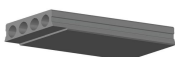
Entwässerungsöffnungen



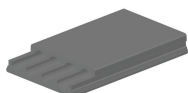
Schrägschnitte



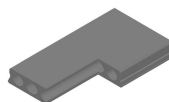
Ausstehende Bewehrung



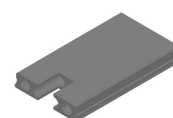
Verjüngte Unterseite



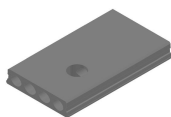
Verjüngte Oberseite



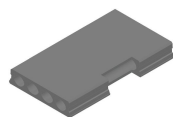
Eckaussparungen



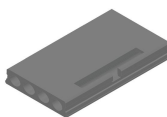
Kopfaussparung



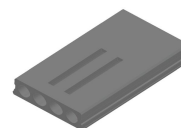
Rundaussparung



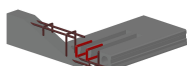
Randaussparung



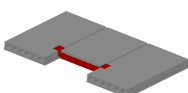
Ausnehmungen zur
Plattenkopplung



Geöffnete Hohlkammern



Open kanalen met
inhangwapening



Wechseleisen
Spannbeton-Hohlplatten



Vorrat

| | Produktion | Abnehmbar | Vorrätig |
|-------------|------------|-----------|----------|
| Malle 1 | | | |
| Malle 2 | | | |
| Frederickx | | X | X |
| Tessenderlo | X | X | X |