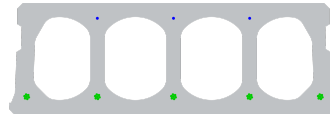


FS200-600



Technische Infos

| | |
|-------------------|--|
| Höhe (Dicke) | 200mm |
| Breite | 596mm |
| Länge | Wap. S500: 4,00m => 9,00m (per 10cm olopemd) |
| Feuerwiderstand | 1 uur |
| Expositionsklasse | XC1; XC2; XC3 |
| Transportgewicht | 2,92 kN/m ² |
| Gewicht /m | 1,75 kN/m |
| Bemessungsgewicht | 3,15 kN/m ² (incl. voegvulling) |
| Hohlraumfüllung | 12,69 l/m |
| Füllbeton | 9,2 l/m ² |
| Betongüte | C 50/60 |
| Stahlqualität | f(pk) 1860 |

Keurmerken



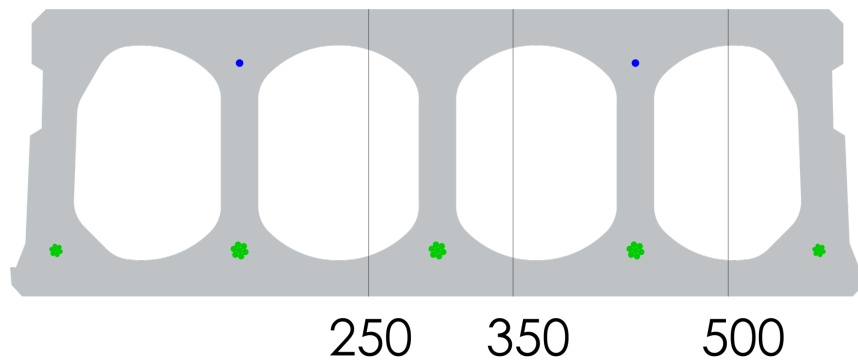


Spannweiten

Zie hiervoor onze online rekenmodule

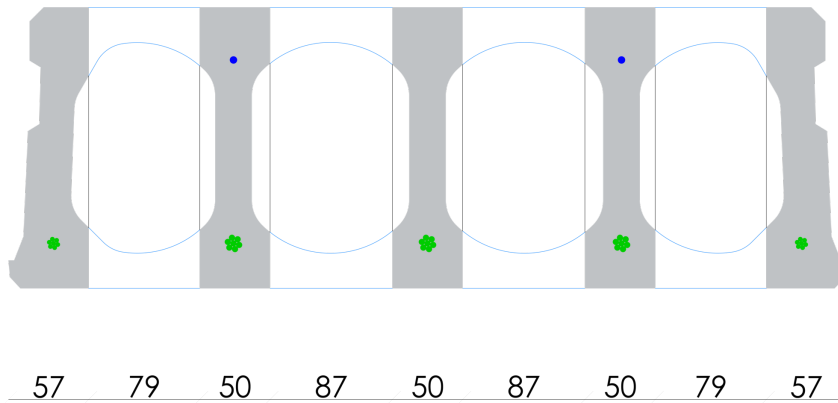


Passplatten

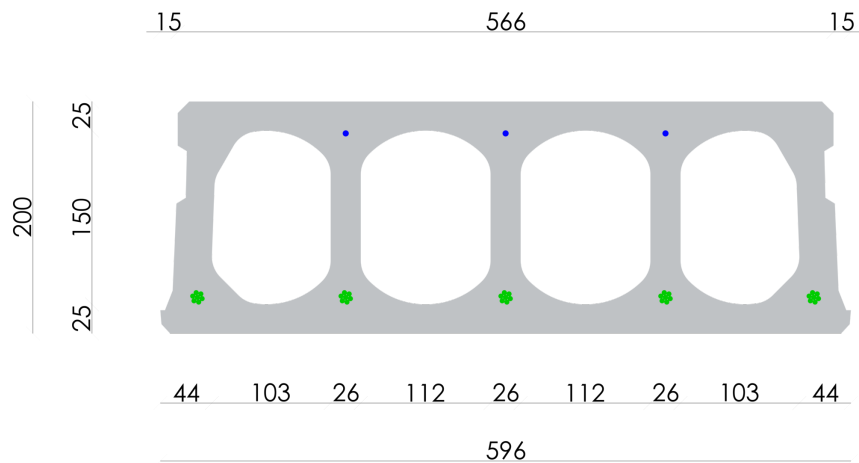




Bohrvorschriften

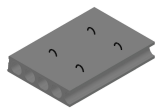


Bewehrungspositionen

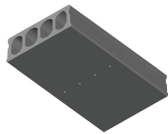




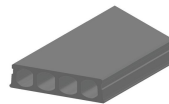
Zubehör



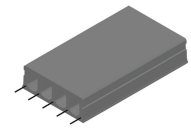
Passplatten -
Spannbeton-Hohlplatte



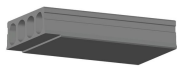
Entwässerungsöffnungen



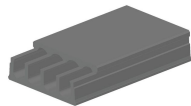
Schrägschnitte



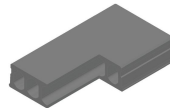
Ausstehende Bewehrung



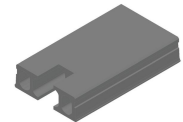
Verjüngte Unterseite



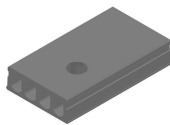
Verjüngte Oberseite



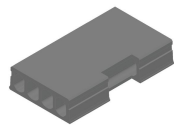
Eckausparungen



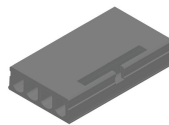
Kopfausparung



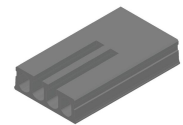
Rundaussparung



Randaussparung



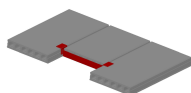
Ausnehmungen zur
Plattenkopplung



Geöffnete Hohlkammern



Open kanalen met
inhangwapening



Wechseleisen
Spannbeton-Hohlplatten



Vorrat

| | Produktion | Abnehmbar | Vorrätig |
|-------------|------------|-----------|----------|
| Malle 1 | | X | X |
| Malle 2 | | | |
| Frederickx | | | |
| Tessenderlo | X | | |

