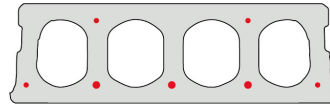


# FS180-600

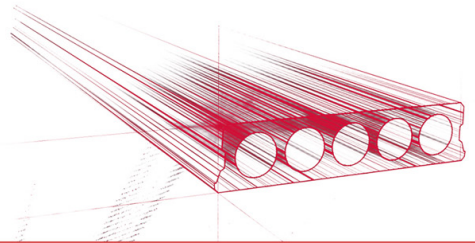


## Technische Infos

Höhe (Dicke)	180mm
Breite	596mm
Länge	Wap. S500: 0,70m => 5,50m op bestelling (per 10cm olopend) Wap. S500: 5,60m => 7,60m uit voorraad (per 10cm olopend) Wap. S500: 7,70m => 8,00m op bestelling (per 10cm olopend)
Feuerwiderstand	1 uur (2u op bestelling)
Expositionsklasse	XC1; XC2; XC3 (andere op bestelling)
Transportgewicht	2,68 kN/m <sup>2</sup>
Gewicht /m	1,61 kN/m
Bemessungsgewicht	2,88 kN/m <sup>2</sup> (incl. voegvulling)
Hohlraumfüllung	11,06 l/m
Füllbeton	8,2l/m <sup>2</sup>
Betongüte	C 50/60
Stahlqualität	f(pk) 1860

## Keurmerken



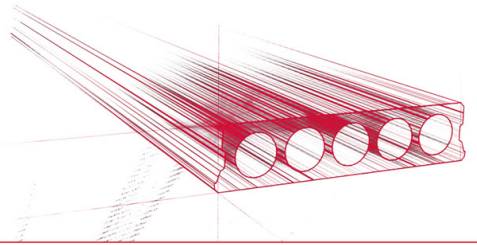


## Spannweiten

---

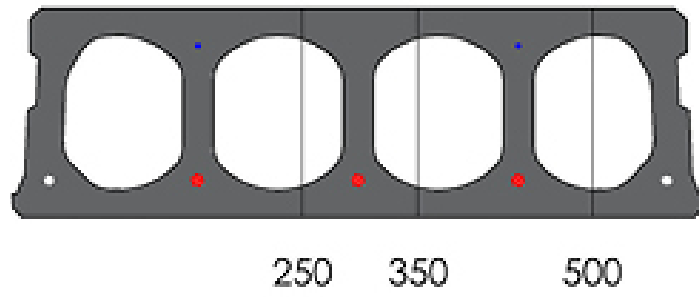
Zie hiervoor onze online rekenmodule

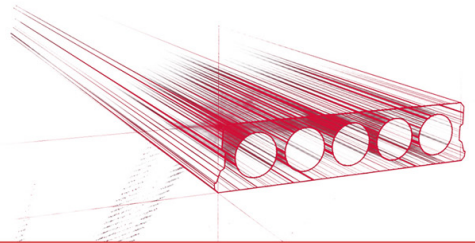




## Passplatten

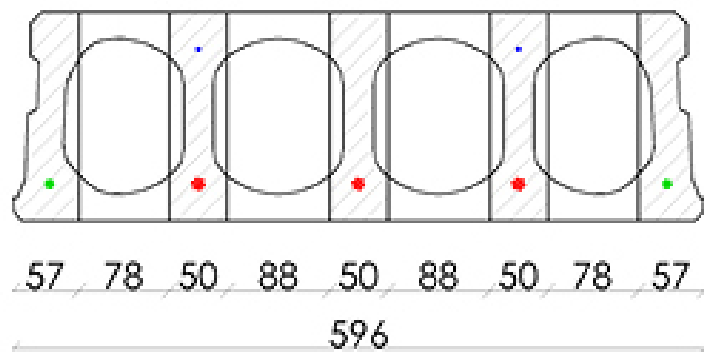
---

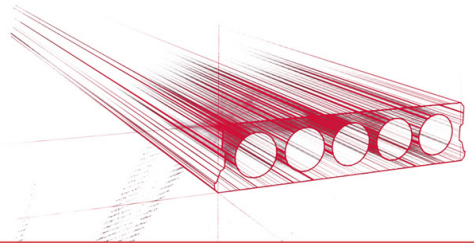




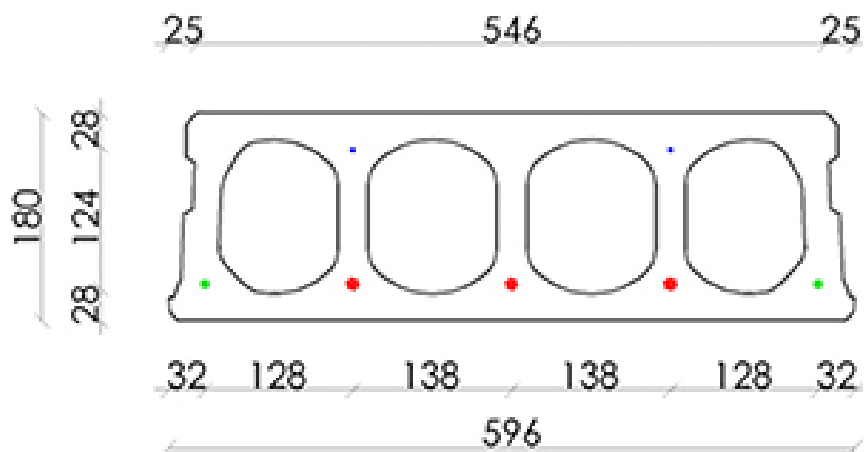
## Bohrvorschriften

---

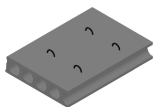




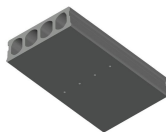
## Bewehrungspositionen



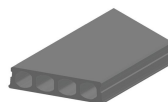
## Zubehör



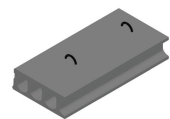
Passplatten -  
Spannbeton-Hohlplatte



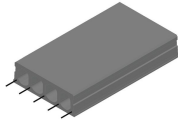
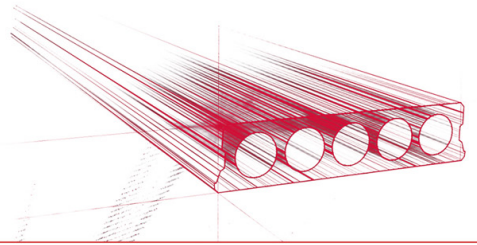
Entwässerungsöffnungen



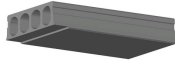
Schrägschnitte



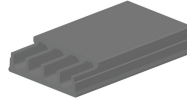
Hubschlaufen



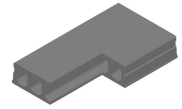
Ausstehende Bewehrung



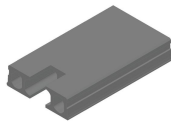
Verjüngte Unterseite



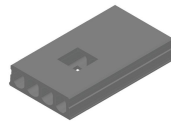
Verjüngte Oberseite



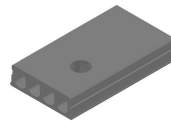
Eckaussparungen



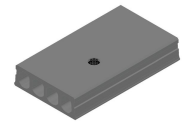
Kopfaussparung



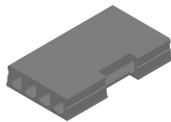
Mittelaussparung



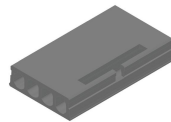
Rundaussparung



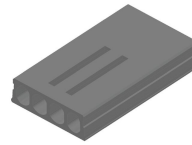
Rundaussparung + E-Dose



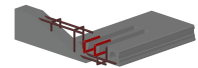
Randaussparung



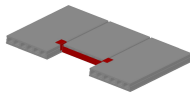
Ausnehmungen zur Plattenkopplung



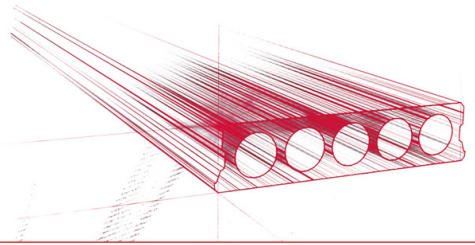
Geöffnete Hohlkammern



Open kanalen met inhangwapening



Wechseleisen  
Spannbeton-Hohlplatten



## Vorrat

	Produktion	Abnehmbar	Vorrätig
Malle 1		X	X
Malle 2			
Frederickx			
Tessenderlo			

