

FS150-600



Technische Infos

Höhe (Dicke)	150mm
Breite	596mm
Länge	Malle 1 : Wap. S500: 1,00m => 7,00m op voorraad (per 10cm oplopend) Tessenderlo: Wap. S500: 5,00m => 7,00m op bestelling (per 10cm oplopend)
Feuerwiderstand	1 uur
Expositionsklasse	XC1; XC2; XC3
Transportgewicht	2,38 kN/m ²
Gewicht /m	1,43 kN/m
Bemessungsgewicht	2,55 kN/m ² (incl. voegvulling)
Hohlraumfüllung	7,85 l/m
Füllbeton	6,7 l/m ²
Betongüte	C 50/60

Keurmerken



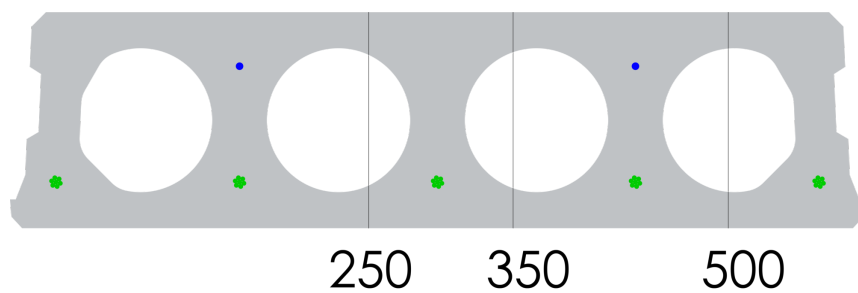


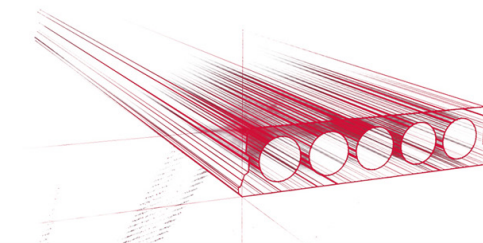
Spannweiten

Zie hiervoor onze online rekenmodule

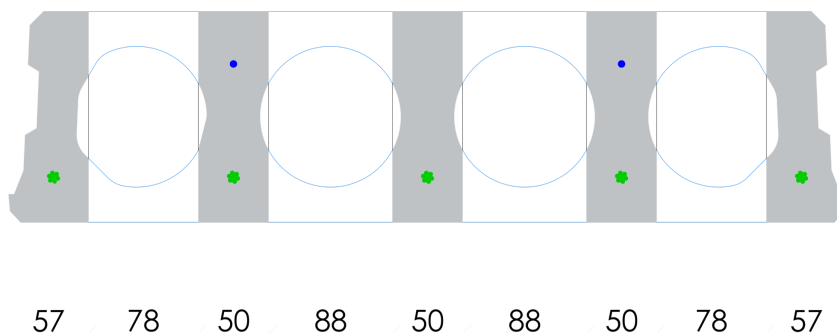


Passplatten

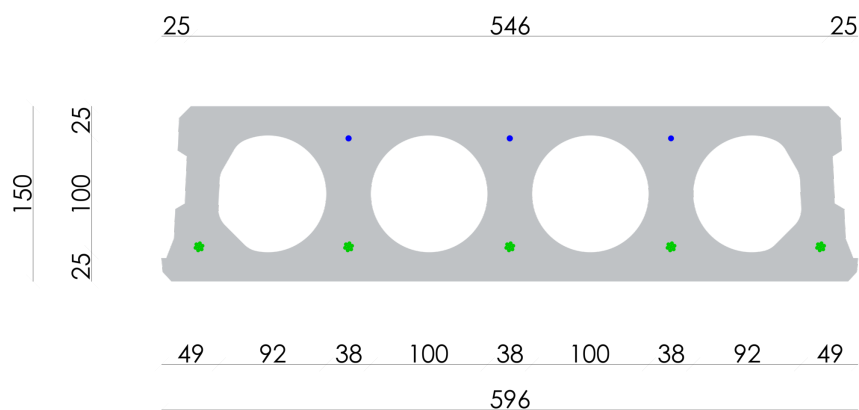


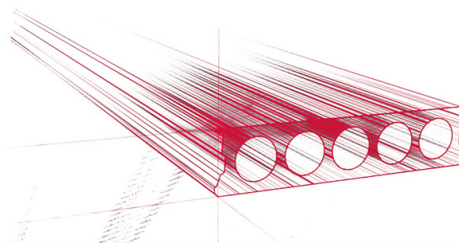


Bohrvorschriften

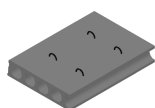


Bewehrungspositionen

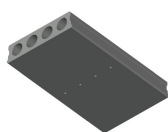




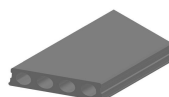
Zubehör



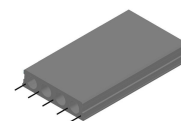
Passplatten -
Spannbeton-Hohlplatte



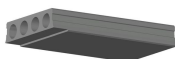
Entwässerungsöffnungen



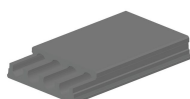
Schrägschnitte



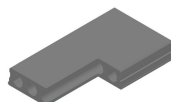
Ausstehende Bewehrung



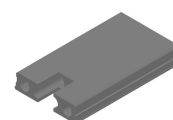
Verjüngte Unterseite



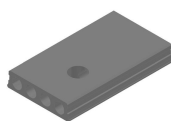
Verjüngte Oberseite



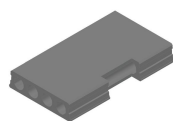
Eckaussparungen



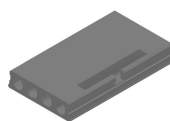
Kopfaussparung



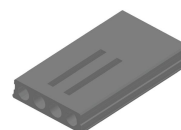
Rundaussparung



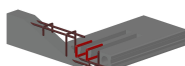
Randaussparung



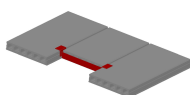
Ausnehmungen zur
Plattenkopplung



Geöffnete Hohlkammern



Open kanalen met
inhangwapening



Wechseleisen
Spannbeton-Hohlplatten



Vorrat

	Produktion	Abnehmbar	Vorrätig
Malle 1		X	X
Malle 2			
Frederickx			
Tessenderlo	X	X	X