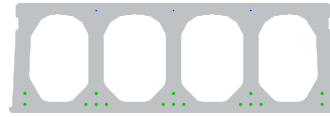




FS400-1200



Technische Infos

Höhe (Dicke)	400mm
Breite	1200mm
Feuerwiderstand	1 Stunde (2 Stunden auf Anfrage)
Expositionsklasse	XC1, XC2, XC3 (andere auf Anfrage)
Transportgewicht	4,32 kN/m ²
Gewicht /m	5,18 kN/m
Bemessungsgewicht	4,65 kN/m ² (inkl. Füllbeton)
Hohlraumfüllung	64,23 l/m
Füllbeton	13,6 l/m ²
Betongüte	C 50/60
Stahlqualität	f(pk) 1860

Keurmerken



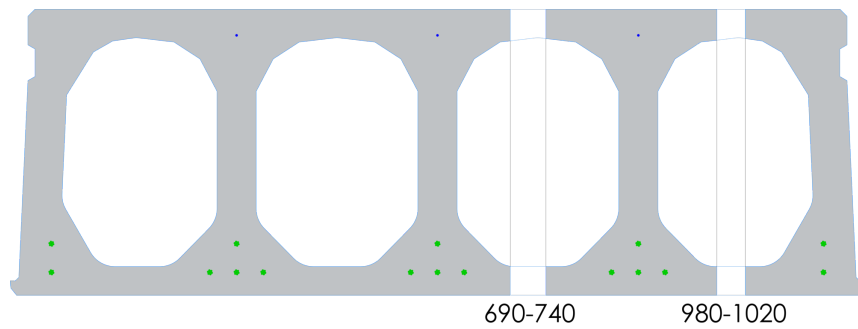


Spannweiten

Zie hiervoor onze online rekenmodule

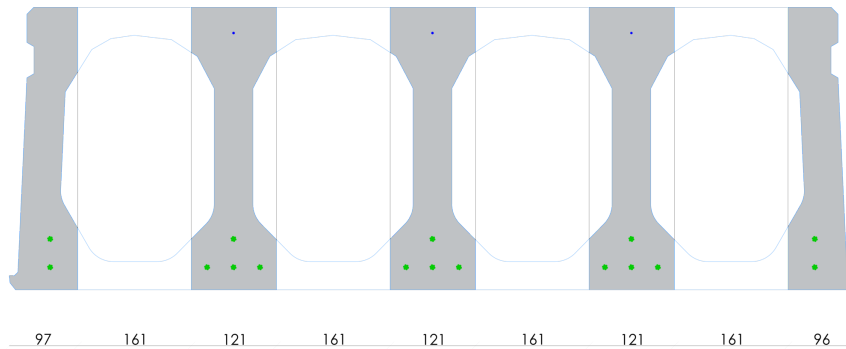


Passplatten

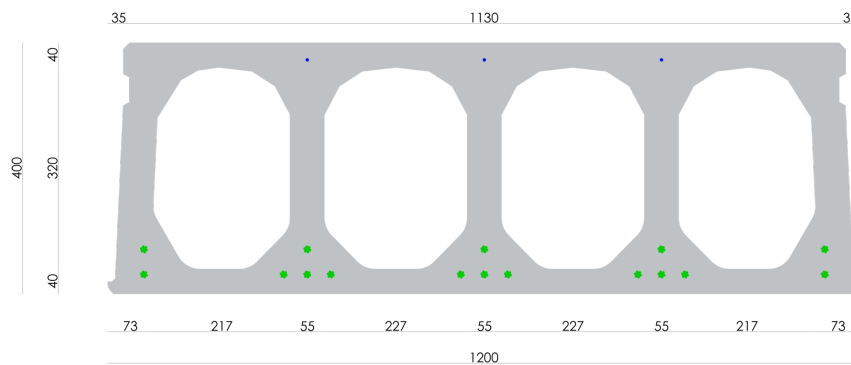


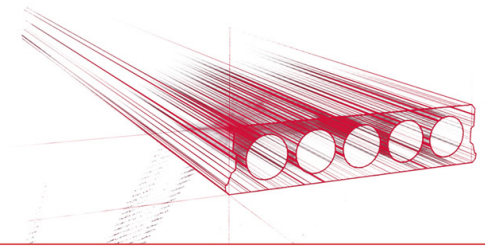


Bohrvorschriften

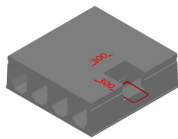


Bewehrungspositionen

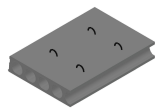




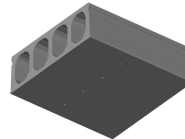
Zubehör



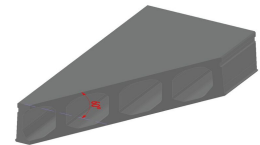
Koppelsparung
(hamerkop)



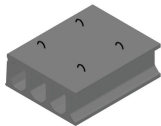
Passplatten -
Spannbeton-Hohlplatte



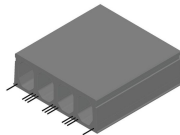
Entwässerungsöffnungen



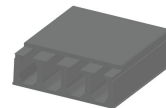
Schrägschnitte



Hubschlaufen



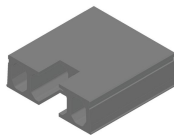
Ausstehende Bewehrung



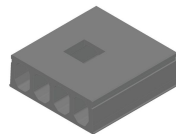
Verjüngte Oberseite



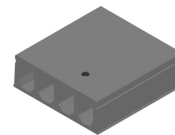
Eckausparungen



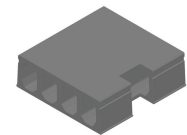
Kopfaussparung



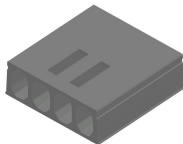
Mittelaussparung



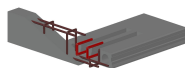
Rundaussparung + E-
Dose



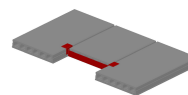
Randaussparung



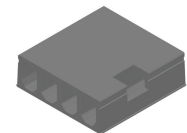
Geöffnete Hohlkammern



Open kanalen met
inhangwapening



Wechseleisen
Spannbeton-Hohlplatten



Vertiefte Aussparungen



Vorrat

	Produktion	Abnehmbar	Vorrätig
Malle 1			
Malle 2	X	X	
Frederickx			
Tessenderlo	X	X	

