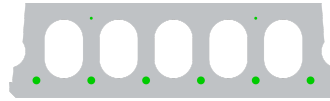


# F170-600



## Technische Infos

Höhe (Dicke)	173mm
Breite	600mm
Länge	Wap. S350: 1,00m => 6,00m uit voorraad (per 10cm olopend) Wap. S700: 5,30m => 6,00m op bestelling (per 10cm olopend)
Feuerwiderstand	1 uur (2u op bestelling)
Expositionsklasse	XC1
Transportgewicht	2,70 kN/m <sup>2</sup>
Gewicht /m	1,62 kN/m
Bemessungsgewicht	3,00 kN/m <sup>2</sup> (incl. voegvulling)
Hohlraumfüllung	6,46 l/m
Füllbeton	10 l/m <sup>2</sup>
Betongüte	C40/50 vanaf 5,30 m

## Keurmerken





## Spannweiten

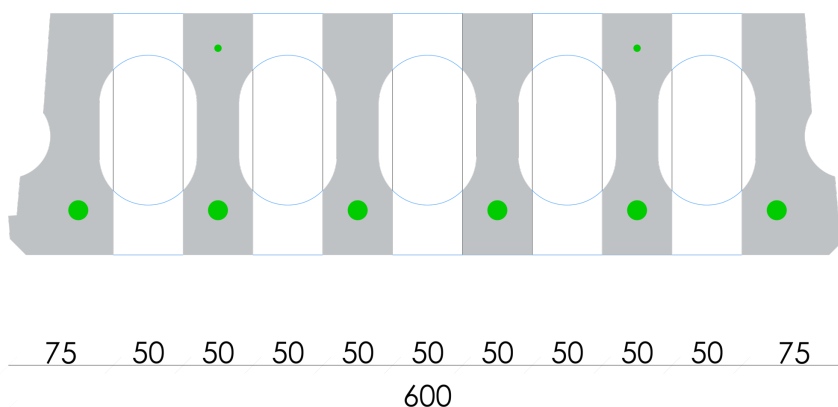
---

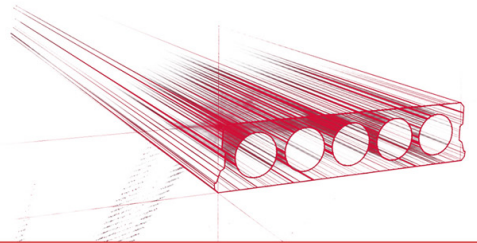
Zie hiervoor onze online rekenmodule



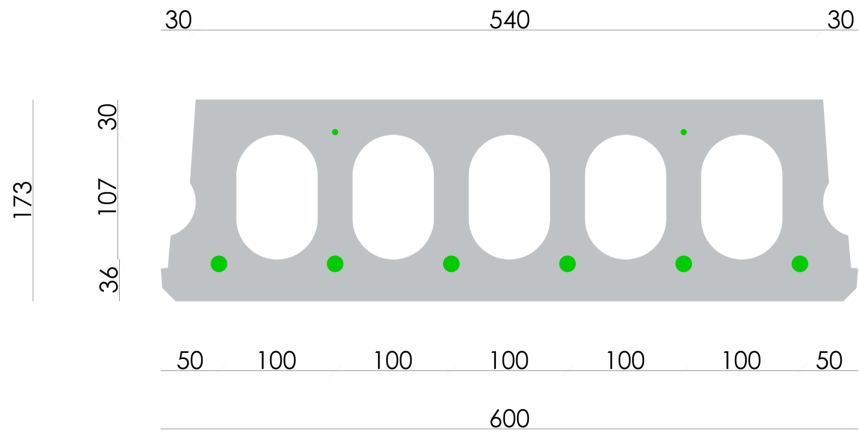
## Bohrvorschriften

---



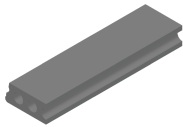


## Bewehrungspositionen

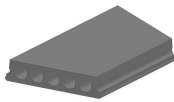




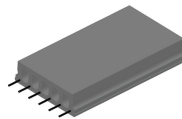
## Zubehör



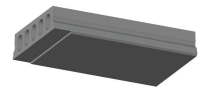
Passplatten - Stahlbeton-  
Hohlplatte



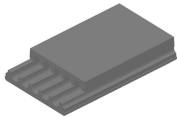
Schrägschnitte



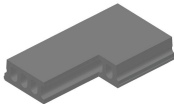
Ausstehende Bewehrung



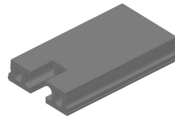
Verjüngte Unterseite



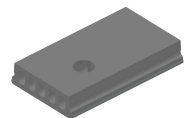
Verjüngte Oberseite



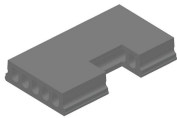
Eckaussparungen



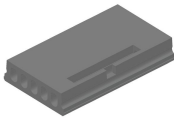
Kopfaussparung



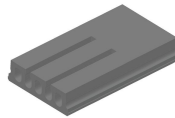
Rundaussparung



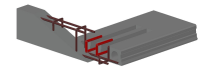
Randaussparung



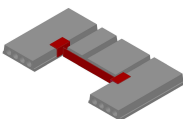
Ausnehmungen zur  
Plattenkopplung



Geöffnete Hohlkammern



Open kanalen met  
inhangwapening



Wechseleisen  
Stahlbeton-Hohlplatten



## Vorrat

	Produktion	Abnehmbar	Vorrätig
Malle 1	X	X	X
Malle 2			
Frederickx			
Tessengerlo			

