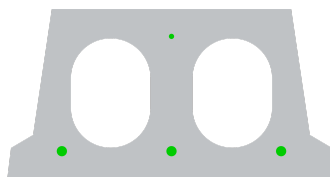


# F170-330

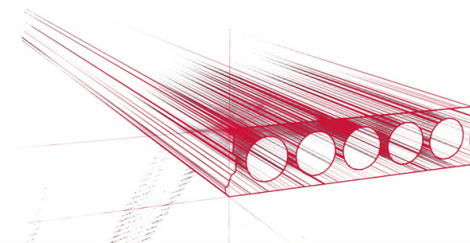


## Technische Infos

|                   |  |
|-------------------|--|
| Höhe (Dicke)      | 173mm  |
| Breite            | 330mm  |
| Länge             | Wap. S350: 2,00m => 6,00m uit voorraad (per 10cm oplopend) |
| Feuerwiderstand   | 1 uur (2u op bestelling)                                   |
| Expositionsklasse | XC1  |
| Transportgewicht  | 2,25 kN/m <sup>2</sup>                                     |
| Gewicht /m        | 0,74 kN/m  |
| Bemessungsgewicht | 3,00 kN/m <sup>2</sup> (incl. voegvulling)                 |
| Hohlraumfüllung   | 7,43 l/m   |
| Füllbeton         | 11 l/m <sup>2</sup>  |
| Betongüte         | C40/50   |

## Keurmerken





## Spannweiten

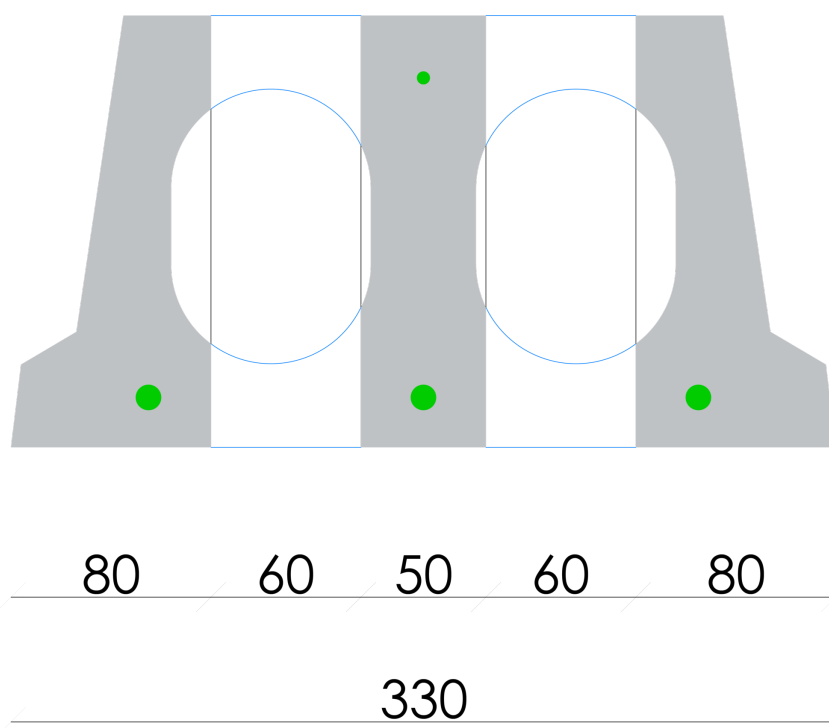
---

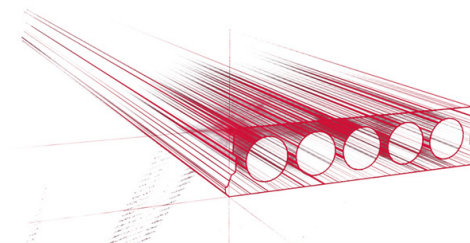
Zie hiervoor onze online rekenmodule



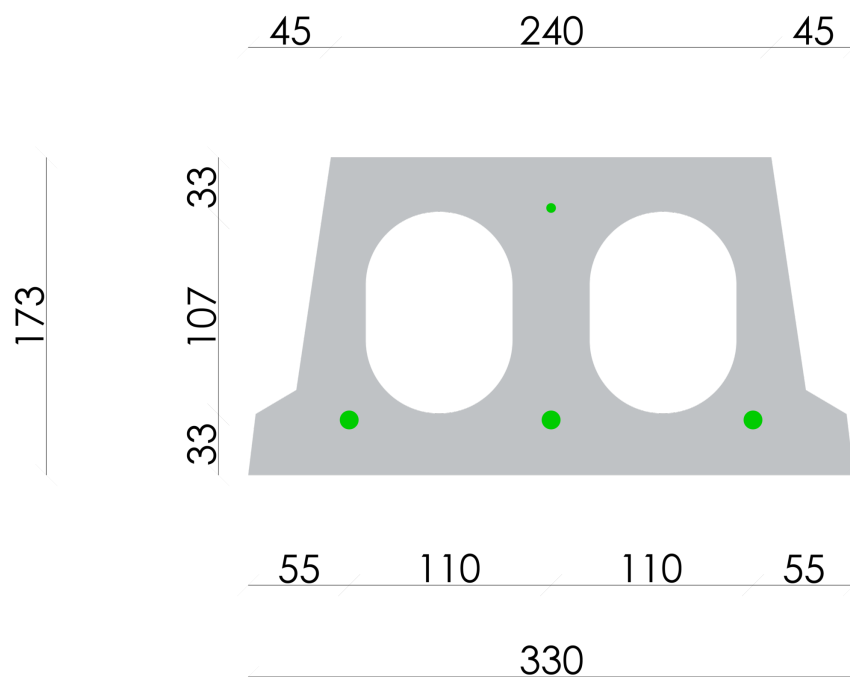
## Bohrvorschriften

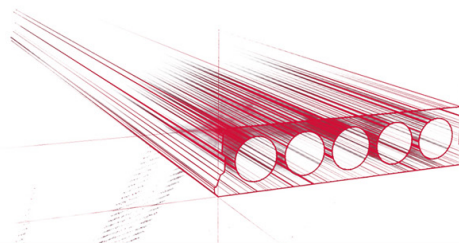
---





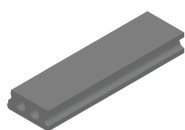
## Bewehrungspositionen





## Zubehör

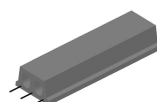
---



Passplatten - Stahlbeton-  
Hohlplatte



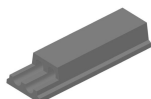
Schrägschnitte



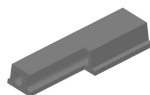
Ausstehende Bewehrung



Verjüngte Unterseite



Verjüngte Oberseite



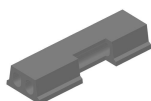
Eckaussparungen



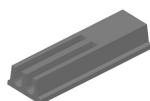
Kopfaussparung



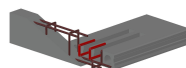
Rundaussparung



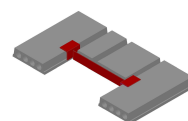
Randaussparung



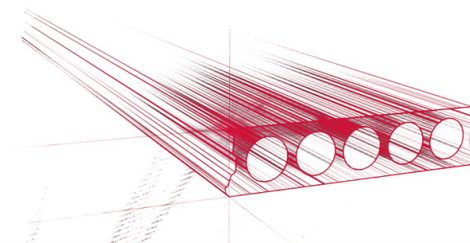
Geöffnete Hohlkammern



Open kanalen met  
inhangwapening



Wechseleisen  
Stahlbeton-Hohlplatten



## Vorrat

|             | Produktion | Abnehmbar | Vorrätig |
|-------------|------------|-----------|----------|
| Malle 1     | X          | X         | X        |
| Malle 2     |            |           |          |
| Frederickx  |            |           |          |
| Tessenderlo |            |           |          |