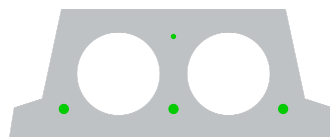


# F130-330

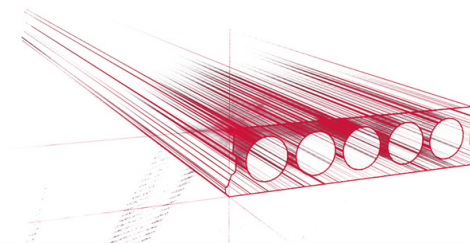


## Technische Infos

Höhe (Dicke)	130mm
Breite	330mm
Länge	Wap. S700: 0,70m => 5,40m uit voorraad (per 10cm oplopend)
Feuerwiderstand	1 uur (2u op bestelling)
Expositionsklasse	XC1
Transportgewicht	1,60 kN/m <sup>2</sup>
Gewicht /m	0,53 kN/m
Bemessungsgewicht	2,15 kN/m <sup>2</sup> (incl. voegvulling)
Hohlraumfüllung	5,41 l/m
Füllbeton	22 l/m <sup>2</sup>
Betongüte	C 40/50
	vanaf 3,80 m

## Keurmerken





## Spannweiten

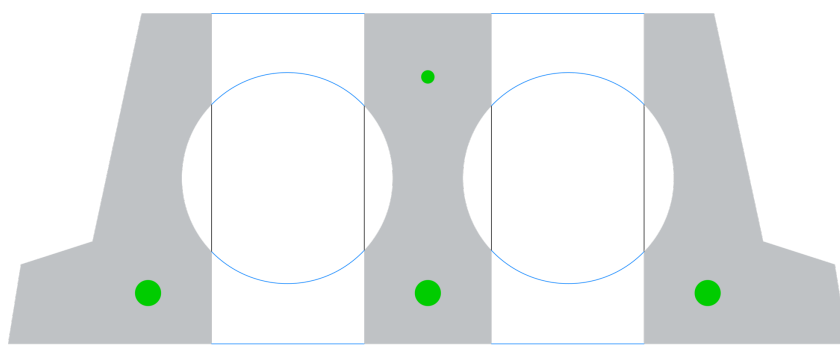
---

Zie hiervoor onze online rekenmodule

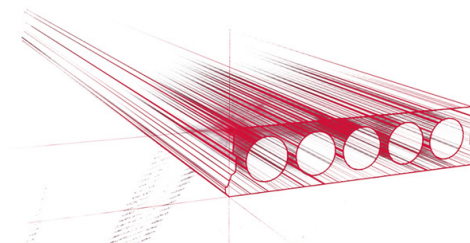


## Bohrvorschriften

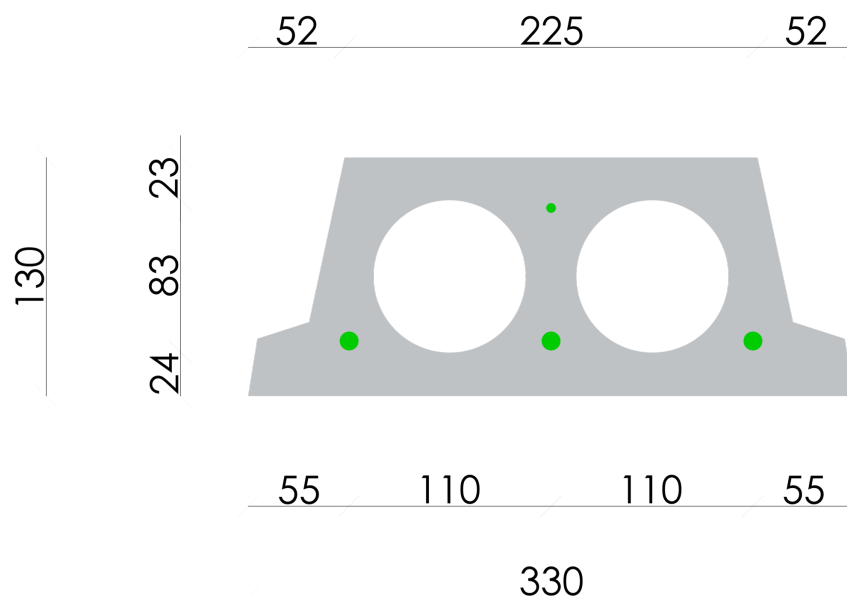
---

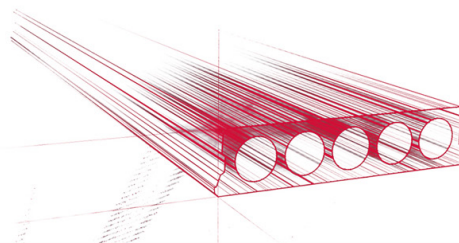


47 60 50 60 80

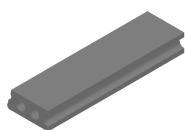


## Bewehrungspositionen





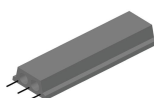
## Zubehör



Passplatten - Stahlbeton-Hohlplatte



Schrägschnitte



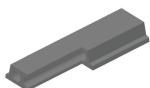
Ausstehende Bewehrung



Verjüngte Unterseite



Verjüngte Oberseite



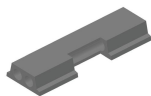
Eckaussparungen



Kopfaussparung



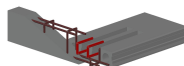
Rundaussparung



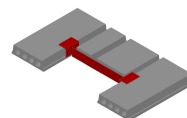
Randaussparung



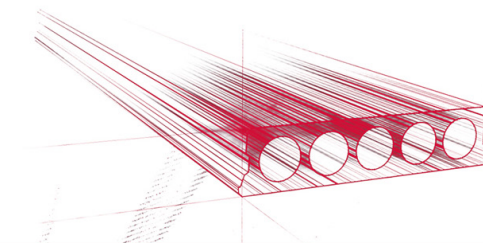
Geöffnete Hohlkammern



Open kanalen met inhangwapening



Wechseleisen Stahlbeton-Hohlplatten



## Vorrat

	Produktion	Abnehmbar	Vorrätig
Malle 1	X	X	X
Malle 2			
Frederickx			
Tessenderlo			